

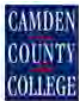
**Camden County College**  
***Public Safety Department***  
**Annual Security and Fire**  
**Safety Report 2023**



[www.ready.gov](http://www.ready.gov)



# For emergency information, class cancellations and snow closings, signup for the Camden County College Cougar Call Alert Notification System.



## CAMDEN COUNTY COLLEGE Cougar Call Alert Notification System Registration Form



The "Cougar Call Alert Notification System" is a quick and reliable method of communication utilized to provide all members of the College Community information related to CCC emergencies, timely warnings for incidents that represent a serious or continuing threat and non-emergencies; such as weather related issues, school closures, traffic concerns, etc.).

This convenient service is designed to keep all members of the college community informed at all times. Cougar Call can be sent to your cellular device via phone call, or text message that may include internet or social media links and email.

The Department of Public Safety encourages all members of the College community to register and periodically update your personal contact information.

### REGISTER NOW for Cougar Call Alert Notification System.

To register, provide your most updated personal information below and submit this form to a Public Safety Office. You may also complete this form online by visiting the webpage labeled "Student Life » Safety on Campus" found on Camden County College's website and (link below).  
[https://www.camdencc.edu/student\\_life/safety-on-campus/cougar-call/](https://www.camdencc.edu/student_life/safety-on-campus/cougar-call/)

Name: \_\_\_\_\_ Email: \_\_\_\_\_

Student ID #: \_\_\_\_\_ Faculty / Staff ID #: \_\_\_\_\_

Cell Number: \_\_\_\_\_ Landline Number: \_\_\_\_\_

If you have questions or need additional information regarding our Cougar Call Alert Notification System please contact the Public Safety Department via phone at 856-374-5089 or email at [publicsafety@camdencc.edu](mailto:publicsafety@camdencc.edu) or visit a Public Safety Office at any of the locations listed below.

Blackwood Campus Public Safety Office Community Center Room 100	Camden Campus Public Safety Office College Hall Building Room 116	Cherry Hill Campus Public Safety Office Rohrer Center Room 115
---	---	--

All information you provide is completely confidential and will not be released to any other persons.

The "**Cougar Call Alert Notification System**" is a quick and reliable method of communication utilized to provide all members of the College Community information related to CCC emergencies, timely warnings for incidents that represent a serious or continuing threat and non-emergencies; such as weather-related issues, school closures, traffic concerns, etc.).

This convenient service is designed to keep all members of the college community informed at all times. Cougar Call can be sent to your cellular device via phone call, or text message that may include internet or social media links and email.

The Department of Public Safety encourages all members of the College community to register and periodically update your personal contact information.

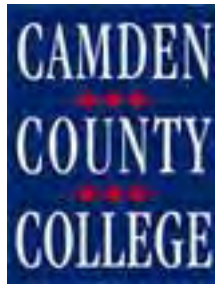
To register, provide your most recently updated personal information on a Cougar Call Request Form. These are available at any of our Public Safety Offices. You may also complete this form online by visiting the webpage labeled "Student Life » Safety on Campus" found on Camden County College's website and (link below).

[https://www.camdencc.edu/student\\_life/safety-on-campus/cougar-call/](https://www.camdencc.edu/student_life/safety-on-campus/cougar-call/)

It is that simple. Sign up today!



Standard text messaging rates may apply from your service provider.



***Sustaining a Protective Environment for our diverse College Community to access a culture which is conducive to achieve a Quality Education.***

***Message from the Executive Director***

The Members of the Camden County College Department of Public Safety welcome all of our College Community to our Campuses. Our professional Public Safety personnel are committed to provide a safe, supportive, caring and inclusive environment for all of our College Community. We are dedicated to supporting a protective educational atmosphere for all students, faculty, staff and guests who work, visit, and enjoy our Campuses.

The safety and well-being of our College Community is the primary mission and responsibility of the Department of Public Safety. Our dedicated Staff are always available to offer assistance and ensure that you have a positive experience at Camden County College. Please visit our concierge desks or Public Safety office if you have any questions or concerns.

The Camden County College Department of Public Safety holds a proud history for maintaining our safe campuses. Our continued success is exhibited through the core values established with the principles and priorities that guide our organization, such as:

**P – Pride:** In our deep satisfaction attained in providing a safe, supportive, caring and inclusive environment for our College Community.

**R – Respect:** For our College Community consideration for a safe space to grow and learn, while providing compassion, sensitivity, and dignity for all individuals.

**I – Integrity:** Enhancing the College Community Trust through our strong moral and ethical guiding principles, accountability, and fairness.

**D – Dedication:** A devotion and affirmation to our College Community and the Colleges mission, vision, and committed goals of recruitment, reclamation, retention, and realization.

**E – Equity:** Sustaining a protective environment which provides inclusiveness, impartiality and justice for all of our College Community.

Ensuring that our Department of Public Safety maintains effectiveness and efficiency is paramount to delivering the appropriate resources to our College Community. I welcome the opportunity learn from your comments and suggestions. “Leadership and learning are indispensable to each other.” – John F. Kennedy.



Robert J. Doyle  
Executive Director of Public Safety/ RETC  
Camden County College  
[rdoyle@camdencc.edu](mailto:rdoyle@camdencc.edu)

# Table of Contents

Why a Campus Security Report? .....	5
Mission, Vision, Values & Goals .....	6
MISSION STATEMENT .....	6
CORE VALUES.....	6
1. Integrity .....	6
2. Professional Excellence .....	6
3. Commitment to Members.....	6
4. Community Partnership .....	6
5. Loyalty .....	6
6. Service .....	6
7. Pride .....	6
8. Respect .....	6
9. Dedication .....	6
10. Equity .....	6
Introduction .....	7
Department Training.....	8
Public Safety Services .....	9
Emergency Messages & School Closing Information.....	10
Clery Compliance Statement for Emergency Response and Evacuation Procedures .....	11
Emergency Procedures Quick Reference Guide .....	15
Winter Weather Safety Tips.....	17
Policy and Guidelines on Alcohol and Other Drugs .....	18
Suicide Prevention and Student Support Counselor/Assistance .....	25
Crisis Hotline Numbers .....	26
Student Health and Wellness.....	28
Access to Campus Facilities.....	30
Anti-Harassment, Intimidation and Bullying.....	34
Crime Prevention/Safety Tips .....	38
Safety Inspections .....	39
Fire Safety .....	40
Policy Prohibiting Sexual Contact and Harassment, Sexual Violence, Relationship Violence and Stalking .....	41
Traffic & Parking Regulations.....	58
Vehicle Safety.....	62
Procedures for Reporting a Crime, Incident or Emergency on Campus.....	63
Additional Services.....	64
Blackwood Campus Map.....	65
Clery Crime Statistics .....	66
Clery Crime Statistics .....	67



# CAMDEN COUNTY COLLEGE PUBLIC SAFETY DEPARTMENT Why a Campus Security Report?

*Campus Safety and Security Reporting requires Camden County College to:*

- Publish an annual report every year by October 1 that contains three years of campus crime statistics and certain campus security policy statements;
- Disclose crime statistics for the campus, public areas immediately adjacent to or running through each campus, and certain non-campus facilities and remote classrooms. The statistics must be gathered from campus public safety, local law enforcement, and other college officials who have “significant responsibility for student and campus activities;”
- Provide “timely warning” notices of those crimes that have occurred and pose an ongoing “threat to students and employees;” and
- Disclose in a public crime log “any crime that occurred on campus, or within the patrol jurisdiction of the campus Public Safety Department and that which is reported to the campus Public Safety Department.”

*(There are additional requirements not listed above.)*

Colleges and universities must publish and distribute their *Jeanne Clery Disclosure of Campus Security Policy and Campus Statistics Act* Annual Crime Report by October 1, each year.

Institutions of higher education are mandated to report certain crimes that occur on or around college campuses for the previous three years. The report included in the link below details all reported incidents from 2020 -2022. Incidents documented in 2022 will be included in next year’s report. [https://www.camdencc.edu/student\\_life/safety-on-campus/campus-security-report/](https://www.camdencc.edu/student_life/safety-on-campus/campus-security-report/)

Notifications of incidents involving safety concerns are communicated to students using the College’s emergency messaging system, Cougar Call Alert Notification System, and by posting Alerts on Campus as well as the home page of CCC’s website.

In addition to this publication, individuals may go to the website listed below to view the latest crime statistics and safety tips provided by the Public Safety Department at Camden County College. [https://www.camdencc.edu/student\\_life/safety-on-campus/campus-security-report/](https://www.camdencc.edu/student_life/safety-on-campus/campus-security-report/)

Details as to how to report suspicious activities, incidents or concerns can also be found by visiting the site. Safety at Camden County College is everyone’s concern.

Hard copies of this booklet can be obtained by visiting the Public Safety Department or by calling (856) 227-7200 ext. 4288 or Direct at (856) 374-5089.



# **CAMDEN COUNTY COLLEGE PUBLIC SAFETY DEPARTMENT Mission, Vision, Values & Goals**

## **MISSION STATEMENT**

It is the mission of Camden County College's Department of Public Safety to support a safe and inclusive environment where quality education and freedom of thought and expression can be achieved, and where social, cultural, and academic values may prosper and grow. The Camden County College Department of Public Safety promises to:

- Provide our services with professionalism, fairness, and sensitivity.
- Maintain a dedicated workforce that is well trained and diversified, and to develop awareness, support, and involvement in keeping our campus a safe environment for learning.
- Conduct ourselves with the highest ethical standards in order to maintain public confidence.
- Remain an important component of the College community, and to be respected and valued by our students, faculty and staff.
- Maintain a dedicated protective educational atmosphere for all of our College Community to work, visit, and enjoy our Campuses.

We will constantly strive to keep our promises and commitments, dedicating ourselves to the public safety profession.

## **CORE VALUES**

The employees of the Department of Public Safety's values bond all personnel together to accomplish specific tasks and objections. We, the members of the Department of Public Safety value:

1. Integrity
2. Professional Excellence
3. Commitment to Members
4. Community Partnership
5. Loyalty
6. Service
7. Pride
8. Respect
9. Dedication
10. Equity



# **CAMDEN COUNTY COLLEGE PUBLIC SAFETY DEPARTMENT Introduction**

It is the mission of Camden County College's Department of Public Safety to support a safe environment where quality education and freedom of thought and expression can be achieved, and where social, cultural, and academic values may prosper and grow.

The staffing of the Department consists of the Executive Director of Public Safety & RETC, the Chiefs of Campuses, Public Safety Sergeants, Public Safety Officers & Tactical Officers with various backgrounds and years of experience.

The Department serves four campuses: Blackwood, Camden, Rohrer and RETC. The Public Safety Department provides in-house safety inspections in an effort to keep the College as safe as possible. During calendar year 2023, the College received several safety inspections from the county, state and/or federal agencies without major safety discrepancies and responded to numerous calls for service.

Camden County College encourages the entire College community, faculty, staff and students to report all incidents witnessed, regardless of the seriousness, to the Public Safety Department.

Most of the Camden County College campuses are staffed by Public Safety Officers seven days a week; 24 hours a day. Additionally, emergency telephones and emergency call-boxes have been placed strategically throughout each campus, along with Emergency Information quick reference posters.

The Camden County College Public Safety Department has full authority to enforce all College policies and directives. Violations of local, county and state laws, procedures and codes are reported directly to the jurisdictional local enforcement authority where each College campus is located. All incidents and emergencies reported to the Public Safety Department are entered in the department's reporting system and immediately investigated by a Public Safety Officer. Minor incidents are logged and filed as incident reports for reference. All violations of the Student Code of Conduct are submitted to the Associate Dean for Student Affairs for review. All violations of New Jersey Statutes are sent to the proper law enforcement agencies. The College has an excellent working relationship with local, county, state and federal law enforcement agencies within our reporting jurisdiction.

Camden County College currently does not have resident halls/buildings. At present, there are no off-campus College clubs or organizations.

The Public Safety Department has access to all areas, buildings, classrooms, custodial closets, offices, etc. The parking lots, walkways and outside patios, some of which have emergency phones, are well illuminated, patrolled and monitored by the Public Safety Department.



# **CAMDEN COUNTY COLLEGE PUBLIC SAFETY DEPARTMENT Department Training**

## **VARIOUS IN-SERVICE TRAINING FOR MEMBERS OF THE PUBLIC SAFETY DEPARTMENT INCLUDES:**

- CPR/AED for the Professional Rescuer
- Bloodborne Pathogen Awareness
- First Responder Certification
- Commitment to Safety
- Contractor Safety
- Electrical Safety
- Emergency Planning
- Fire Extinguisher
- Hand & Power Tool Safety
- Laboratory Safety
- Lock Out/Tag Out
- Respect in the Workplace
- Sexual Harassment Awareness
- Slips, Trips & Falls
- Violence in the Workplace
- Defensive Driver Training
- Crisis Intervention Training (C.I.T.)
- Incident Report Writing
- Methods of Instruction Certification
- Field Training Officer Certification
- Field Training Program
- Bicycle Patrol Certification
- Drug Impaired Subject Training
- Traffic Direction
- ICS-100
- ICS-200
- NIMS -700
- Emergency Communications
- Disaster Preparedness & Multi-Hazard Emergency Management
- Emergency Medical Response
- Active Shooter/Hostile Event
- Protestor & Demonstrations
- Mental Health First Aid
- Behavioral Threat Assessment & Management
- Clery Act
- Incident Response & Investigative Technique
- Fire Safety, Response & Evacuation to Active Fires
- Vehicle Use & Services Procedures
- Bomb Threat
- Methods of Instruction
- Opioid Overdose & Naloxone Administration
- Title IX





# CAMDEN COUNTY COLLEGE PUBLIC SAFETY DEPARTMENT Public Safety Services

The Public Safety Department offers a wide variety of services to the college community as an added measure to help ensure safety and security. These services include: jump starting dead batteries, unlocking car doors for those who have locked their keys inside, a safety escort service to and from parking lots or classrooms, and assistance for the physically challenged. Additionally, individuals are encouraged to go to their vehicles after dark in groups of two or more for added protection.

## **PATROL UNITS**

Safety is an important issue at Camden County College and, as such, the Public Safety Department provides various methods of patrol systems, such as motorized, foot and bicycle patrols on campus.

## **LOCKOUTS**

Call Public Safety by using one of the in-house phones or activate the "Call Boxes" located in the parking lots. Please give your location and a uniformed officer will be dispatched to your location. You will be asked to sign a waiver form, to allow a Public Safety Officer to enter your vehicle.

## **JUMP STARTS**

If your car won't start, please contact Public Safety and an officer will respond to assist you. In the event your car battery is dead, Public Safety can provide a "jump start." You will be asked to sign a waiver form.



*Public Safety Officers are available to assist you at all times.*

---

*If you are in need of assistance, please call:*

*(856) 374-5089*

*or use the emergency call boxes located in most parking lots.*

## **PUBLIC SAFETY ESCORTS**

Students and staff are encouraged to walk to the parking lots in groups. If you want an escort to your vehicle or class, contact Public Safety and an officer will assist you. Please tell the department where you are currently located, along with your destination.



# CAMDEN COUNTY COLLEGE PUBLIC SAFETY DEPARTMENT Emergency Messages & School Closing Information

## EMERGENCY MEDICAL SERVICES

The Camden County College Public Safety Department currently employs several New Jersey State Departments of Health Certified Emergency Medical Technicians (EMT), as well as Emergency First Responders. In the event you or someone you know is ill or injured on campus, please call the Public Safety Department immediately at:

- Blackwood/RETC (856) 227-7200 Ext. 4288  
(856) 374-5089
- Camden (856) 227-7200 Ext. 1393  
(856) 374-5089
- Rohrer (856) 227-7200 Ext. 6057  
(856) 374-5089

Or use an emergency phone or activate one of the "Emergency Call Boxes" throughout the Camden County College campus.

## F.E.R.P.A./EMERGENCY CONTACT OF STUDENTS, STAFF AND FACULTY

The Public Safety Department will make every effort to assist persons attempting to make contact with students, staff and faculty in the event of an emergency. The Public Safety Department adheres strictly to the regulations of the Family Educational Rights and Privacy Act (F.E.R.P.A.). In response to such a



request, The Public Safety Department will need to confirm the identity and record the pertinent information of the requesting party. Public Safety will request the name of the student or employee they wish to contact and the nature of the

emergency. Public Safety will record the emergency message and will dispatch an Officer to attempt to locate the student or employee to deliver the message.

As per F.E.R.P.A. regulations, Public Safety will not give information of the whereabouts of any registered student, staff or faculty member, nor confirm if they are currently employed or registered as a student. If the person(s) requesting is on campus, Public Safety will not allow them to attempt to search for an individual on campus.

Classes will not be interrupted except in the event of an emergency. It is the responsibility of each student to inform family and friends that personal messages cannot be accepted.

## SCHOOL CLOSINGS

In the event any of the Camden County College campuses are closed due to severe weather or a campus emergency, Camden County College will issue a school closing alert or safety alert to the College community through the following media:

### KYW NEWS RADIO

- #559 Day/College Closed
- #2559 Evening/College Closed

COLLEGE WEBPAGE: [www.camdencc.edu](http://www.camdencc.edu)

FACEBOOK: <https://www.facebook.com/camdencc>

## COUGAR CALL

### ALERT NOTIFICATION SYSTEM

The Cougar Call Alert Notification System is a voluntary, free text and voicemail service utilized by the College to deliver emergency and other non-essential messages in mass to the College community. Students, staff and faculty can register their phone number and phone service carrier information at the Public Safety Office. Registering for the Cougar Call Alert Notification System requires the completion of a form which are available in our Public Safety Offices and on the [College's website](http://www.camdencc.edu).

[https://www.camdencc.edu/student\\_life/safety-on-campus/cougar-call/](https://www.camdencc.edu/student_life/safety-on-campus/cougar-call/)



# CAMDEN COUNTY COLLEGE PUBLIC SAFETY DEPARTMENT Clery Compliance Statement for Emergency Response and Evacuation Procedures

Camden County College is committed to providing a safe learning and working environment for its students and employees. Safety; however, is everyone's responsibility.

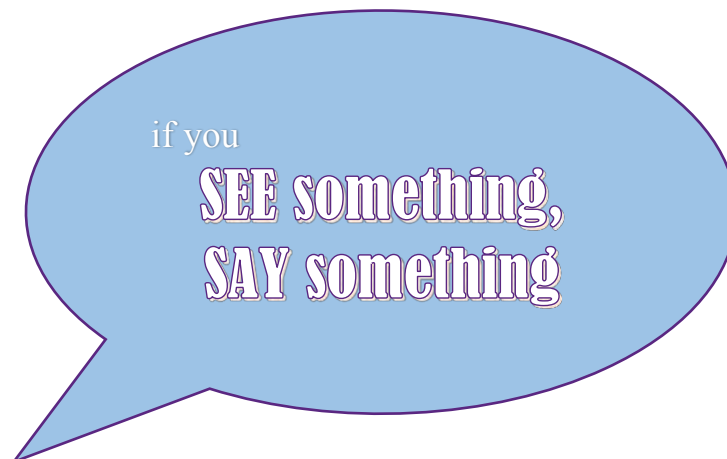
Quick and reliable communication is critical during a campus emergency. At Camden County College, we rely on a number of ways to communicate to our students and employees, including email, voicemail, Internet and the media (i.e., radio, television and newspapers).

Additionally, in the event of a campus-wide emergency, the College will utilize the mass communication emergency alert system, referred to as the **COUGAR CALL ALERT NOTIFICATION SYSTEM**. The Cougar Call Alert Notification System serves as the primary means to notify the campus community of an emergency or school closing.

Upon confirmation of an emergency or dangerous situation, the Cougar Call Alert Notification System may be used to evacuate a building, an entire campus, to cancel all school related activities, or to instruct the College community to shelter-in-place. Information is sent via automated telephone calls, text messages, and emails.

If you have any questions regarding the Cougar Call Alert Notification System , please feel free to contact the Department of Public Safety at 856-374-5089.

Safety on campus is everyone's responsibility. Remember,





# CAMDEN COUNTY COLLEGE PUBLIC SAFETY DEPARTMENT Clery Compliance Statement for Emergency Response and Evacuation Procedures



He's afraid  
of spiders.

She's afraid  
of heights.

**They're not  
afraid to  
speak up!**

If you  
**see**  
something,  
**say**  
something



---

It's up to all of us! Keep  
your eyes and ears open.  
Know your surroundings.  
It's that important!

---

## **REPORT SUSPICIOUS ACTIVITY**

Call the number  
below or **Dial 9-1-1**  
in case of an  
emergency.

# **856-374-5089**

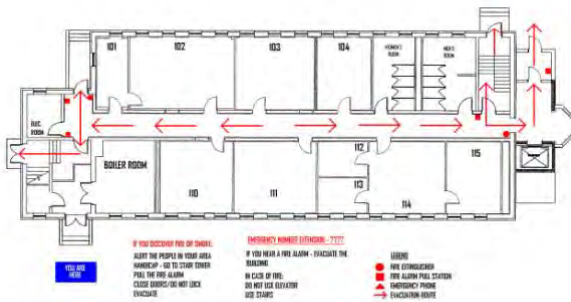


# CAMDEN COUNTY COLLEGE PUBLIC SAFETY DEPARTMENT Fire Safety Evacuations

Building evacuations **MUST** occur when:

- a fire alarm sounds;
- when deemed appropriate and necessary by the Public Safety Department officer on the scene; or
- when notified via the “Cougar Call Alert Notification System .”

alert others to do the same. Make sure all doors, closets, and windows are closed; this may limit the damage from fire and smoke. Take all personal items with you to include: keys, cell phones, book bags and medications as you may not be permitted to re-enter the building.



When ordered to evacuate or when alarms are activated, **always leave immediately.** Exit quickly and calmly using the nearest emergency escape routes and marked exits and proceed to the point of assembly areas. **Do not use elevators.** Emergency assembly areas and points include parking lots and other strategic locations at least 500 feet from the buildings.

Assist persons requiring evacuation assistance to get to designated areas. Be alert for trapped, injured, or other persons needing assistance, and **alert Public Safety** if help is needed.

When an evacuation is deemed necessary, **everyone MUST evacuate.** Once outside, evacuees should proceed to the nearest **emergency evacuation point of assembly area,** which is centrally located throughout each campus, or move to a clear area **at least 500 feet from the building.**

Please keep streets, circles, fire lanes, fire hydrants and walkways clear for emergency responders and their vehicles.

When a building evacuation alarm sounds, please leave by the closest marked exit and

For shelter-in-place instructions, please review the Emergency Procedures Quick Reference guide located in each classroom.



# CAMDEN COUNTY COLLEGE PUBLIC SAFETY DEPARTMENT Fire Drills

## FIRE DRILLS

In the interest of safety and preparedness, the Department of Public Safety conducts periodic fire drill exercises. These fire drills are done in conjunction with the Camden County Fire Marshal and local fire departments. When a fire alarm is activated, every person must immediately vacate the building. There are **no** exceptions to this mandate.

We encourage every member of the College community to familiarize themselves with the "Emergency Procedures" bulletin posted inside of every campus classroom and common area. When evacuating, please be sure to take all belongings with you. Once out of the building, maintain a safe distance of at least 500 feet from the structure. Do not re-enter the building until instructed to do so by Public Safety or fire department personnel. Even though you may hear the audible fire alarm silenced, you must remain outside until you are instructed by Public Safety personnel that it is safe to reenter the building. If you smell smoke or see fire on campus and a fire alarm is not activated, leave the area, activate the nearest fire pull station and contact public safety as soon as possible. For those individuals in a multi-story building who have mobility issues, please go to the nearest elevator and await assistance from Public Safety personnel.



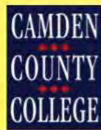


# CAMDEN COUNTY COLLEGE PUBLIC SAFETY DEPARTMENT Emergency Procedures Quick Reference Guide

## EMERGENCY

### EMERGENCY PROCEDURES QUICK REFERENCE

In case of an emergency contact PUBLIC SAFETY at:



**7777** From A Campus Phone  
Or Call **9-1-1** From A Cell Phone



#### ACTIVE SHOOTER/HOSTILE EVENT

- When possible, Run, Hide, Fight response
  - If possible, exit the building to a safe area
  - Dial 9-1-1 Call Public Safety give descriptive information
- If you cannot exit the building:
- Go to nearest room
  - Close door, lock the door if possible
  - Turn off lights
  - Take cover, stay calm, quiet & out of sight
  - Dial 9-1-1 / Put cell phone on vibrate
  - Do not leave or unlock door until law enforcement assists you from the building
  - Do not confront the shooter, except as a last resort
- For more information about Active Shooter Procedures please visit [www.camdencc.edu/safety-on-campus/](http://www.camdencc.edu/safety-on-campus/) and [www.fbi.gov/about/partnerships/office-of-partner-engagement/active-shooter-resources](http://www.fbi.gov/about/partnerships/office-of-partner-engagement/active-shooter-resources)

#### BUILDING EVACUATION

- When you hear a fire Alarm you must leave the building
  - Take personal belongings with you
  - Evacuate by nearest unobstructed exit
  - Close doors behind you
  - Do not use elevators
  - Move to a safe area 300 feet away from building
  - Do not re-enter building until authorized by emergency personnel
- Persons with disabilities on upper floors:
- Move to stair tower. Call public safety or 9-1-1. Tell them your location and tell them you are a person with a disability needing assistance

#### FIRE

- Activate the nearest Fire Pull Station – Know your location
- Dial 9-1-1 Call Public Safety
- Tell others as you leave by nearest exit and assist the handicapped
- Follow building evacuation guidelines

#### SUSPICIOUS OBJECT/PACKAGE

- Do not touch or disturb the object or package
- Move to a safe distance, then call public safety
- If possible, keep others away from object
- Prepare to evacuate if necessary

#### TO REPORT A CRIME/SUSPICIOUS PERSON

- If you See Something, Say Something
- Call public safety or use any emergency phone
- Do not ignore the behavior or delay the call
- Be a good witness. Tell Call Taker everything you know about the situation and persons
- Do not hang up until told to by Call Taker
- Take only actions necessary for self defense
- If safe, stay where you are until help arrives

#### DISRUPTIVE OR VIOLENT BEHAVIOR

- If you See Something, Say Something
- Dial 9-1-1 Call Public Safety
- Stay calm. Do not argue.
- Do not physically confront the person
- Do not block the person's means of exit
- If there is immediate danger, leave the area

#### SEVERE WEATHER EMERGENCY

- If possible, move to lowest level hallways or take cover under desk
- If safe to do so, secure vital equipment & files
- Shut off electronic equipment
- Stay away from windows
- Call public safety to report injuries or damage
- Follow building evacuation guidelines – if necessary

#### MEDICAL EMERGENCIES

- Dial 9-1-1 Call Public Safety – Tell Call Taker as much as you know about the situation and conditions
- Render First Aid if you are trained
- Remain calm and assure the injured person help is on the way
- Do not attempt to move an injured person unless necessary to prevent further injury

#### PERSON IN EMOTIONAL CRISIS

- Dial 9-1-1 Call Public Safety
- Help keep person calm
- Do not put yourself in danger
- Do not block the person's exit route (For non-emergencies call the dean of students or Public Safety for advice or direction)

#### SEXUAL ASSAULT

- If you've been sexually assaulted or someone reports to you they were: Get to a safe place.
- All sexual assaults are crimes – you should call Public Safety or police. Seek medical attention whether you make a report or not.
- Before police arrive, do not shower, drink, eat, or change clothes. If you are there to help, provide reassurance but refrain from touching the victim before emergency personnel arrive.

#### POWER OUTAGE

- Dial 9-1-1 Call Public Safety
  - Turn off computers and other equipment
  - Move CAUTIOUSLY to lighted area and follow exit signage
- If people are trapped in an elevator:
- Call Public Safety / Stay Calm
  - Do not attempt to exit elevator through hatches without assistance from emergency services
  - Follow building evacuation guidelines – if necessary

#### CHEMICAL HAZARDS OR GAS LEAKS

- Dial 9-1-1 Call Public Safety
  - Do not pull fire alarm
  - Do not touch light switches or electrical equipment
  - Limit inhalation of fumes if possible
  - Do not touch spilled substance
  - Move to a clear area (uphill/upwind)
  - Keep others away Isolate contaminated persons.
- If you or someone else contacts a suspicious chemical/substance:
- Eye wash and Shower stations are located in the Bio/Chemistry Labs and other designated areas
  - Immediately flush affected area with plenty of water for at least 15 minutes
  - Wash with plenty of soap and water
  - Remove contaminated clothing
  - Seek medical attention immediately
  - Follow building evacuation guidelines – if necessary

## INFORMATION



# CAMDEN COUNTY COLLEGE PUBLIC SAFETY DEPARTMENT



***DO NOT RETURN TO AN EVACUATED AREA OR BUILDING UNTIL DIRECTED BY A PUBLIC SAFETY OFFICER.***

## CAMPUS EVACUATION

The directions for a campus evacuation are the same as a building evacuation. You will be advised by Public Safety personnel in person or via the **Cougar Call Alert Notification System** when you must leave campus and go to a designated area off campus. When doing so, please remember to proceed in a safe and orderly manner.

## SEVERE WEATHER

When severe weather conditions exist on campus, students, staff and faculty should take certain precautions to ensure safe travel and prevention of weather related accidents of all kinds.

When operating a vehicle in severe weather conditions of any kind, especially icy or low visibility conditions, be sure to drive at or below the speed limit. Maintain a safe following distance and refrain from talking or texting while driving.

When walking in severe weather conditions, choose footwear with rubber soles, good traction and high ankle support. Be sure to tie footwear tightly. Be alert for hazards in your path of travel, such as ice, snow and water puddles.

Observe posted "wet floor" caution signage and follow any posted detours on roadways or walking paths. Wipe excess water and snow from your footwear on the doormats at each entrance. When walking on stairways, use the handrails for support.

If you notice weather related hazards or potentially unsafe conditions on campus, contact the Public Safety Department and advise of the nature and location. An Officer will be dispatched to the location to address the problem and arrange for any required repair or remediation.

As information regarding the progression of severe weather patterns becomes available to the College, updated notifications will be issued to the College community via the Media described in the "**SCHOOL CLOSINGS**" section of this report.

Severe weather-related issues could result in early dismissals, campus closing, college-wide closing or instructions to shelter-in-place.







# CAMDEN COUNTY COLLEGE PUBLIC SAFETY DEPARTMENT Winter Weather Safety Tips

## Winter Weather Safety Tips

### Walking

- \* Choose footwear with rubber soles, good traction and high ankle support
- \* Tie footwear tightly
- \* Be alert for ice, snow and water in your path
- \* Take short, shuffling steps
- \* Avoid carrying heavy or larger items
- \* Wipe excess snow and water from your footwear on door mats
- \* Always use handrails on staircases



### Driving



- \* Clear all snow and ice from your vehicle before driving
- \* Allow for extra travel time to avoid the urge to rush
- \* Maintain a safe following distance from other vehicles
- \* Observe all posted speed limits and traffic signs
- \* Observe all detours and traffic advisories
- \* Avoid parking or driving in areas that have not been cleared of snow

**If you see an icy or untreated area, notify Public Safety immediately!**

The Public Safety Department can be reached by using the emergency phone system in place throughout all campus buildings and at Blue Light Call System Stations located along campus walkways.

Public Safety can be contacted directly by dialing:

**(856) 374-5089**





# **CAMDEN COUNTY COLLEGE**

## **PUBLIC SAFETY DEPARTMENT**

### **Policy and Guidelines on Alcohol and Other Drugs**

#### **WHAT EVERY STUDENT AND EMPLOYEE MUST KNOW**

It is the objective of Camden County College to provide a safe, drug-free environment for all members of the college community and to fully comply with local, state and federal statutes. Moreover, the college is required to comply with the Drug-Free Workplace Act of 1988, 41 U.S.C., Section 701, et seq., and the Drug-Free School and Committees Act Amendment of 1989, Public Law 101-226 and 34 CFR Part 86, as well as other relevant substance abuse laws. Therefore, Camden County College has adopted the following policies regarding the use of drugs and alcohol by students and employees.

These guidelines were developed to promote a healthy, safe and drug-free academic and work environment, provide assistance to employees and students who identify themselves as suffering from alcohol and/or other drug dependency and/or abuse, and to safeguard the college, its interests and its assets.

#### **SUBSTANCE ABUSE**

Camden County College is an educational institution committed to maintaining an environment which allows students to enjoy the full benefits of their learning experience and to understand the negative consequences of the illicit use of alcohol and drugs on their lives. In accordance with the policy approved by the Board of Trustees of Camden County College, and in accordance with Public Law 101-226, the College declares that it will make every effort to provide its students with an environment that is free of the problems associated with

the unauthorized use and abuse of alcohol and illegal drugs. The possession and general use of alcoholic beverages on campus is prohibited. The use, possession, sale or being under the influence of illegal narcotics, chemicals, psychedelic drugs or other dangerous substances is illegal and forbidden on College property. The College is committed to promoting the wellness and positive self-development of its students, faculty and staff. The unauthorized use and abuse of alcohol and the illegal use and abuse of drugs inhibits students from attaining the benefit of their learning experiences and exposes them to serious illness and health risks. Therefore, illegal substances are prohibited on College property.

#### **PROHIBITED USE OF DRUGS OR ALCOHOL**

It is the responsibility of students and employees to familiarize themselves with and adhere to all College rules and regulations related to alcohol and other drugs including adherence to all local, state and federal laws. Any employee who observes a student or employee violating these laws, rules, or regulations or demonstrating impaired behavior is responsible to immediately report the behavior to his/her immediate supervisor who will in turn report the observation to the appropriate college personnel. If a student or employee demonstrates impaired behavior and there is reasonable suspicion that he/she may be under the



influence of a controlled substance, the Public Safety Department must be notified.

# **CAMDEN COUNTY COLLEGE PUBLIC SAFETY DEPARTMENT Policy and Guidelines on Alcohol and Other Drugs**

An advertisement for addiction awareness. The background is a collage of images: on the left, three young people (two men and one woman) are looking at a book together; on the right, a person's face is shown in a state of distress or pain, with a hand holding their head. The text is overlaid on this background.

**HELP? INFO?  
(877) 266-8222**

**HEROIN. PILLS. IT ALL KILLS.**

**It's not miles away.  
It's not other kids.  
It's right in your backyard.**

**camden county**  
Making It Better, Together.

Public Service Announcement from the Camden County Board of Freeholders' Addiction Awareness Task Force. To learn more about prevention go to [camdencounty.com](http://camdencounty.com)



# CAMDEN COUNTY COLLEGE PUBLIC SAFETY DEPARTMENT

## Policy and Guidelines on Alcohol and Other Drugs

### HEALTH RISKS ASSOCIATED WITH ALCOHOL AND OTHER DRUG USE

Numerous health risks have been identified with substance abuse (use of illicit drugs and excessive use of alcohol). Abusers can lose resistance to disease, develop heart problems, contract infections, or become malnourished, physically exhausted, and even die.

Reality is often distorted, reactions may be slower, and the risk of accidents can increase. Extended substance abuse can cause coma, respiratory arrest, and convulsions. Injected drugs increase the risk for infectious diseases such as hepatitis and AIDS. Body systems are affected. The liver, lungs, and heart are damaged.

For women, there is an increase in birth defects associated with use during pregnancy. The Student Services office located in the College Welcome Center (CWC) has more in-depth information on the inherent health risks related to substance abuse.

*Adapted from U.S. Department of Justice-publication Drugs of Abuse*

Dependence											
Narcotics											
Drugs	CSA Schedules	Trade or Other Names	Medical Uses	Physical	Psycho-logical	Tolerance	Duration (Hours)	Usual Method	Possible Effects	Effects of Overdose	Withdrawal Syndrome
Heroin	Substance I	Diamorphine, Horse, Smack, Black tar, Chiva, Negra (black tar)	None in U.S., Analgesic, Antitussive	High	High	Yes	3-4	Injected, snorted, smoked	Euphoria, drowsiness, respiratory depression, constricted pupils, nausea	Slow and shallow breathing, clammy skin, convulsions, coma, possible death	Watery eyes, runny nose, yawning, loss of appetite, irritability, tremors, panic, cramps, nausea, chills and sweating
Morphine	Substance II	M/S Contin, Roxanol, Oramorph SR, MSIR	Analgesic	High	High	Yes	3-12	Oral, injected			
Hydrocodone	Substance II, Product III, V	Hydrocodone w/ Acetaminophen, Vicodin, Vicoprofen, Tussionex, Lortab	Analgesic, Antitussive	High	High	Yes	3-6	Oral			
Hydromorphone	Substance II	Dilaudid	Analgesic	High	High	Yes	3-4	Oral, injected			
Oxycodone	Substance II	Roxicet, Oxycodone w/ Acetaminophen, OxyContin, Endocet, Percocet, Percodan	Analgesic	High	High	Yes	3-12	Oral			
Codeine	Substance II, Products III, V	Acetaminophen, Guaifenesin or Promethazine w/Codeine, Fiorinal, Fioricet or Tylenol w/Codeine	Analgesic, Antitussive	Moderate	Moderate	Yes	3-4	Oral, injected			
Other Narcotics	Substance II, III, IV	Fentanyl, Demerol, Methadone, Darvon, Stadol, Talwin, Paregoric, Buprenex	Analgesic, Antidiarrheal, Antitussive	High/Low	High/Low	Yes	Variable	Oral, injected, snorted, smoked			

Depressants											
Drugs	CSA Schedules	Trade or Other Names	Medical Uses	Physical	Psycho-logical	Tolerance	Duration (Hours)	Usual Method	Possible Effects	Effects of Overdose	Withdrawal Syndrome
gamma Hydroxybutyric Acid	Substance I, Product III	GHB, Liquid Ecstasy, Liquid X, Sodium Oxycbate, Xyrem®	None in U.S., Anesthetic	Moderate	Moderate	Yes	3-6	Oral	Slurred speech, disorientation, drunken behavior without odor of alcohol, impaired memory of events, interacts with alcohol	Shallow respiration, clammy skin, dilated pupils, weak and rapid pulse, coma, possible death	Anxiety, insomnia, tremors, delirium, convulsions, possible death
Benzodiazepines	Substance IV	Valium, Xanax, Haldon, Ativan, Restoril, Rohypnol (Rohifex, R-2), Klonopin	Antianxiety, Sedative, Anticonvulsant, Hypnotic, Muscle Relaxant	Moderate	Moderate	Yes	1-8	Oral, injected			
Other Depressants	Substance I, II, III, IV	Ambien, Sonata, Meperobamate, Chloral Hydrate, Barbiturates, Methaqualone (Quaalude)	Antianxiety, Sedative, Hypnotic	Moderate	Moderate	Yes	2-6	Oral			



# CAMDEN COUNTY COLLEGE PUBLIC SAFETY DEPARTMENT

## Policy and Guidelines on Alcohol and Other Drugs

Stimulants											
Drugs	CSA Schedules	Trade or Other Names	Medical Uses	Physical	Psycho-logical	Tolerance	Duration (Hours)	Usual Method	Possible Effects	Effects of Overdose	Withdrawal Syndrome
Cocaine	Substance II	Coke, Flake, Snow, Crack, Coca, Blanca, Perico, Nieve, Soda	Local anesthetic	Possible	High	Yes	1-2	Snorted, smoked, injected	Increased alertness, excitation, euphoria, increased pulse rate & blood pressure, insomnia, loss of appetite	Agitation, increased body temperature, hallucinations, convulsions, possible death	Apathy, long periods of sleep, irritability, depression, disorientation
Amphetamine/ Meth-amphetamine	Substance II	Crank, Ice, Cristal, Krystal Meth, Speed, Adderall, Dexedrine, Desoxyn	Attention deficit/hyperactivity disorder, narcolepsy, weight control	Possible	High	Yes	2-4	Oral, injected, smoked			
Methylphenidate	Substance II	Ritalin (lly's), Concerta, Focalin, Metadate	Attention deficit/hyperactivity disorder	Possible	High	Yes	2-4	Oral, injected, snorted, smoked			
Other Stimulants	Substance III, IV	Adipex P, Ionamin, Prek-2, Didrex, Provigil	Vasoconstriction	Possible	Moderate	Yes	2-4	Oral			

Hallucinogens											
Drugs	CSA Schedules	Trade or Other Names	Medical Uses	Physical	Psycho-logical	Tolerance	Duration (Hours)	Usual Method	Possible Effects	Effects of Overdose	Withdrawal Syndrome
MDMA and Analogs	Substance I	(Ecstasy, XTC, Adam), MDA (Love Drug), MDEA (Eve), MBDB	None	None	Moderate	Yes	4-6	Oral, snorted, smoked	Heightened senses, teeth grinding and dehydration	Increased body temperature, electrolyte imbalance, cardiac arrest	Muscle aches, drowsiness, depression, acne
LSD	Substance I	Acid, Microdot, Sunshine, Boomers	None	None	Unknown	Yes	8-12	Oral	Illusions and hallucinations, altered perception of time and distance	(LSD) Longer, more intense "trip" episodes	None
Phencyclidine and Analogs	Substance I, II, III	PCP, Angel Dust, Hog, Love boat, Ketamine (Special K), PCE, PCPv, TCP	Anesthetic (Ketamine)	Possible	High	Yes	1-12	Smoked, oral, injected, snorted		Unable to direct movement, feel pain, or remember	Drug seeking behavior
Other Hallucinogens	Substance I	Psilocybe mushrooms, Mescaline, Peyote, Cactus, Ayahuasca, DMT, Dextromethorphan* (DXM)	None	None	None	Possible	4-8	Oral			

Cannabis											
Drugs	CSA Schedules	Trade or Other Names	Medical Uses	Physical	Psycho-logical	Tolerance	Duration (Hours)	Usual Method	Possible Effects	Effects of Overdose	Withdrawal Syndrome
Marijuana	Substance I	Pot, Grass, Sinsemilla, Blunts, Mota, Yerba, Grifa	None	Unknown	Moderate	Yes	2-4	Smoked, oral	Euphoria, relaxed inhibitions, increased appetite, disorientation	Fatigue, paranoia, possible psychosis	Occasional reports of insomnia, hyperactivity, decreased appetite
Tetrahydrocannabinol	Substance I, Product III	THC, Marinol	Antinauseant, Appetite stimulant	Yes	Moderate	Yes	2-4	Smoked, oral			
Hashish and Hashish Oil	Substance I	Hash, Hash oil	None	Unknown	Moderate	Yes	2-4	Smoked, oral			

Anabolic Steroids											
Drugs	CSA Schedules	Trade or Other Names	Medical Uses	Physical	Psycho-logical	Tolerance	Duration (Hours)	Usual Method	Possible Effects	Effects of Overdose	Withdrawal Syndrome
Testosterone	Substance III	Depo Testosterone, Sustanon, Sten, Cyp	Hypogonadism	Unknown	Unknown	Unknown	14-28 days	Injected	Virilization, edema, testicular atrophy, gynecomasia, acne, aggressive behavior	Unknown	Possible depression
Other Anabolic Steroids	Substance III	Parabolan, Winstrol, Equipose, Anadrol, Dianabol, Primabolin-Depo, D-Ball	Anemia, Breast cancer	Unknown	Yes	Unknown	Variable	Oral, injected			

Inhalants											
Drugs	CSA Schedules	Trade or Other Names	Medical Uses	Physical	Psycho-logical	Tolerance	Duration (Hours)	Usual Method	Possible Effects	Effects of Overdose	Withdrawal Syndrome
Amyl and Butyl Nitrite		Pearls, Poppers, Rush, Locker Room	Angina (Amyl)	Unknown	Unknown	No	1	Inhaled	Flushing, hypotension, headache	Methemoglobinemia	Agitation
Nitrous Oxide		Laughing gas, balloons, Whippets	Anesthetic	Unknown	Low	No	0.5	Inhaled	Impaired memory, slurred speech,	Vomiting, respiratory depression, loss of consciousness, possible death	Trembling, anxiety, insomnia, vitamin deficiency, confusion, hallucinations, convulsions
Other Inhalants		Adhesives, spray paint, hair spray, dry cleaning fluid, spot remover, lighter fluid	None	Unknown	High	No	0.5-2	Inhaled	drunken behavior, slow onset vitamin deficiency, organ damage		





# CAMDEN COUNTY COLLEGE PUBLIC SAFETY DEPARTMENT

## Policy and Guidelines on Alcohol and Other Drugs

Alcohol											
Drugs	CSA Schedules	Trade or Other Names	Medical Uses	Physical	Psycho-logical	Tolerance	Duration (Hours)	Usual Method	Possible Effects	Effects of Overdose	Withdrawal Syndrome
		Beer, wine, liquor	None	High	High	Yes	1-3	Oral	Impaired memory, slurred speech, drunken behavior, slow onset vitamin deficiency, organ damage	Vomiting, respiratory depression, loss of consciousness, possible death	Trembling, anxiety, insomnia, vitamin deficiency, confusion, hallucinations, convulsions

### Tobacco/Nicotine

#### Brief Description:

Through the use of tobacco, nicotine is one of the most heavily used addictive drugs and the leading preventable cause of disease, disability, and death in the U.S. Cigarette smoking accounts for 90% of lung cancer cases in the U.S., and about 38,000 deaths per year can be attributed to secondhand smoke. Cigarettes and chew tobacco are illegal substances in most U.S. states for those under 18; a handful of states have raised the age to 19.

#### Effects:

Nicotine is highly addictive. The tar in cigarettes increases a smoker's risk of lung cancer, emphysema, and bronchial disorders. The carbon monoxide in smoke increases the chance of cardiovascular diseases. Pregnant smokers have a higher risk of miscarriage or low birthweight babies. Secondhand smoke causes lung cancer in adults and greatly increases the risk of respiratory illnesses in children.





# CAMDEN COUNTY COLLEGE PUBLIC SAFETY DEPARTMENT Policy and Guidelines on Alcohol and Other Drugs

## DRUG AND ALCOHOL DEPENDENCY

Camden County College recognizes that alcohol, drug abuse and or dependency is a treatable condition and encourages any student or employee who is experiencing problems to seek help through the appropriate resources of the college or outside treatment facilities.

Camden County College provides support for students and employees in the following ways:

Camden County College sponsors informational programs and activities related to alcohol and other drug education and prevention programs, including alcohol and other drug education information, which is distributed during student orientation. Students can contact the Camden County College Silent Witness Tip line at (856) 374-4907. Students can also pick up a print brochure on *“Feeling Down? Overwhelmed? Depressed?”* located at the Student Affairs and Public Safety Offices.

## RESOURCES AND SERVICES

Confidential assistance is available to students of Camden County College who request information, referral or counseling in the area of substance abuse or chemical dependency. Students may either self-refer or be referred by others to the Counseling Services by the Office of Student Affairs.



## EMPLOYEE ASSISTANCE PROGRAM

Confidential assistance is available to employees of Camden County College who request information, referral or counseling in the area of substance abuse or chemical dependency. Employees may either self-refer or be referred by the Office of Human Resources.



## SUBSTANCE ABUSE REFERRAL PHONE NUMBERS

- Al-Anon/Alateen ..... (856) 547-0855
- Alcohol & Drug Referral National Hotline ..... (800) 252-6465
- Alcohol Hotline ..... (800) 322-5525
- DHS Addictions Hotline ..... (800) 238-2333
- Camden County Drug & Alcohol Resources ..... (856) 427-6553
- ComPsych Guidance Resources ..... (800) 272-7255
- Services Empowering Rights of Victims ..... (800) 225-0196
- Jefferson Health, Cherry Hill, NJ ..... (856) 488-6725
- Living Proof Recovery Center ..... (856) 216-7134
- Narcotics Anonymous ..... (877) 796-5541
- Substance Abuse and Mental Health Services Administration ..... (800) 662-4357





# **CAMDEN COUNTY COLLEGE PUBLIC SAFETY DEPARTMENT Suicide Prevention and Student Support Counselor/Assistance**

Camden County College is devoted to creating a safety net to help prevent suicide and violence. The most effective ways to prevent suicide and violence are to know the warning signs, take them seriously, and help the individual access the appropriate resources. The only real risk is in doing nothing. If you or someone you know is suffering and you want to know how to help, call a Suicide Prevention hotline for 24/7 assistance.

Attending Camden County College should be an exciting and dynamic experience that can include making lifelong friends, engaging in exciting intellectual pursuits or joining groups and sports teams.

**FOR IMMEDIATE  
ASSISTANCE, CALL  
PUBLIC SAFETY OR 911.**

## **STUDENT SUPPORT CONTACT**

Camden County College recognizes the need some students have for support and counseling throughout their college education. In addition to the College's academic advising staff, the College also offers students access to the Associate Dean of Student Affairs/Deputy Title IX/504 Coordinator at 856-374-5088. This individual will provide follow-up on crisis situations, coordinate referrals and assist students with personal matters.

[www.NJ211.org](http://www.NJ211.org)

**NJ HOPELINE  
855-654-6735**

**988 Suicide and Crisis Lifeline  
Available 24 hrs.**

**800-SUICIDE (784-2433)**

**800-273-TALK (8255)**

**Contact Community Helplines:  
877-266-8222**

**Oaks Integrated Care  
856-254-3800**

**Crisis Text Line  
Text Hello to 741-741**

**Military Help  
1-800-273-8255**

[www.suicidepreventionlifeline.org](http://www.suicidepreventionlifeline.org)

**1-800-572-8255**

[www.dbsalliance.org](http://www.dbsalliance.org)

[www.contactwecare.org](http://www.contactwecare.org)





# CAMDEN COUNTY COLLEGE PUBLIC SAFETY DEPARTMENT Crisis Hotline Numbers

## CAMDEN COUNTY COLLEGE CAMPUS CONTACT INFORMATION

<b>Blackwood Campus</b> .....	(856) 227-7200
Direct Dial to Public Safety.....	(856) 374-5089
Blackwood Emergency .....	ext. 7777
Public Safety, Information .....	ext. 4288
Executive Dean, Student Affairs .....	ext. 4371
<b>Camden City Campus</b> .....	(856) 338-1817
Direct Dial to Public Safety.....	(856) 374-5089
Emergency.....	ext. 7777
Public Safety, Information .....	ext. 1393
Camden Technology Center (CTC) Building Conference Center Concierge Desk.....	ext. 3102
<b>Cherry Hill - William G. Rohrer Center</b> .....	(856) 874-6000
Direct Dial to Public Safety.....	(856) 374-5089
Emergency.....	ext. 7777
Public Safety, Information .....	ext. 6057
Center Services .....	ext. 6032
<b>Regional Emergency Training Center (RETC)</b> .....	(856) 874-6004
Direct Dial to Public Safety.....	(856) 374-5089
Emergency.....	ext. 7777
Workforce Training and Continuing Education Services .....	ext. 4955





# **CAMDEN COUNTY COLLEGE PUBLIC SAFETY DEPARTMENT Crisis Hotline Numbers**

## **CAMDEN COUNTY COMMUNITY-BASED SERVICES & CONTACT INFORMATION**

### **Behavioral Health**

**800-273-TALK (8255)**

**Camden County College – Blackwood**

#### **Campus**

Cooper Family Medicine  
and Behavioral Health Offices  
200 College Drive, Polk Hall  
Blackwood, NJ 08012  
(856) 536-1630

[www.NJ211.org](http://www.NJ211.org)

(877) 652-1148 | Fax: (973) 887-4680

[info@NJ211.org](mailto:info@NJ211.org)

### **Services Empowering Rights of Victims**

#### **Center for Family Services**

584 Benson Street  
Camden, NJ 08103  
(856) 964-7378 hotline  
(866) 295-7378 hotline  
(856) 964-4150 fax  
(800) 852-7897 TTY

#### **Center for Family Services**

108 Somerdale Road  
Voorhees, NJ 08043  
(856) 964-1990

#### **Woman’s Referral Central**

(800) 322-8092

#### **Crisis Intervention**

(609) 261-8000

#### **NJ HOPELINE**

**855-654-6735**

#### **988 Suicide and Crisis Lifeline**

**Available 24 hrs.**

**800-SUICIDE (784-2433)**



**Oaks Integrated Care**  
2051 Springdale Road  
Cherry Hill NJ 08002  
**HOTLINE:** (856) 254-3800

**Camden County Women's**

**Center**

P.O. Box 1459 Blackwood, NJ 08012  
Emergency Shelter  
24 Hr. Hotline: (856) 227-1234  
TTY: (856) 227-9264  
Office: (856) 227-1800  
Fax: (856) 227-1261  
Web: [www.njaconline.org/13.html](http://www.njaconline.org/13.html)

**Outreach Center**

415 Cooper Street, Camden, NJ 08102  
Phone: (856) 963-5668  
Fax: (856) 964-4998

**Cooper University Health Care**  
856-342-2000  
One Cooper Plaza, Camden, NJ 08102  
[www.cooperhealth.org](http://www.cooperhealth.org)

**Jefferson Health**

2201 Chapel Ave West  
Cherry Hill, NJ 08002  
856-488-6500  
<http://www.kennedyhealth.org>

**Virtua Voorhees**

100 Bowman Drive  
Voorhees, NJ 08043  
(856) 247-3000  
<http://www.virtua.org>

**Statewide Domestic Violence Hotline**  
(800) 572-723

**CAMDEN COUNTY COLLEGE  
PUBLIC SAFETY DEPARTMENT  
Student Health and Wellness**

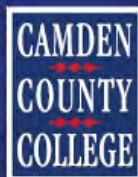


EVERYDAY IS A  
NEW DAY FOR  
WELLNESS

**Camden County College cares about every student's health and wellness.** If you or someone you know is dealing with personal issues we encourage you to tell someone and seek help.

The Student Affairs division is well trained to assist students with various health and wellness needs. **YOU DO NOT HAVE TO HANDLE THINGS ALONE, WE ARE HERE TO HELP.**

WE ARE WHAT'S  
NEXT



Camden County College is partnered with various mental health agencies, community resources, and referral assessments. Counseling in some cases, may be free of charge or on a sliding fee.

*Start today to create  
a healthier lifestyle!*

**CALL 911 FOR  
POLICE EMERGENCIES**

**CCC PUBLIC SAFETY**

- > Blackwood ext. 7777
- > Camden ext. 1393
- > Cherry Hill ext. 6057

**UWILL: FREE TELEHEALTH/  
MENTAL HEALTH SERVICES**

1-833-646-1526  
app.uwill.com

**SUICIDE PREVENTION HOTLINE**

1-855-654-6735 or text 988

**CRISIS TEXTLINE**

Text Hello to 741-741

**OAKS INTEGRATED CARE**

2051 Springdale Road  
Cherry Hill, NJ 08003  
1-800-963-3377

**NJ 211: ASSISTANCE FROM THE  
STATE OF NEW JERSEY**

**LGBTQ TREVOR PROJECT**

1-212-695-8650

**24 HOUR HOMELESS HELPLINE**

Text 211

**DOMESTIC VIOLENCE HOTLINE**

1-800-572-Safe (7233)

**RAPE CRISIS HOTLINE**

1-888-264-Rape (7273)

**NJ ADDICTION SERVICES  
HOTLINE**

1-844-276-2777

**MILITARY HELP**

1-800-273-8255

**CCC STUDENT SERVICES**

856-374-5088



**ANY QUESTIONS?**

Contact Student Support Services  
**Associate Dean Jacqueline Tenuto**  
(856) 227-7200, ext. 5088  
jtenuto@camdencc.edu

1/2020

www.uwill.com | www.camdencc.edu/public-notice



# CAMDEN COUNTY COLLEGE PUBLIC SAFETY DEPARTMENT Access to Campus Facilities

## BUILDINGS

It is the responsibility of those who use rooms, offices and areas to lock doors; turn off lights; and close windows. The Public Safety Department will check these areas on campus during off hours, but the primary responsibility for security lies with the user.

## KEYS/CARD ACCESS

Keys are provided to individual staff members on a need-to-enter basis as determined by the appropriate supervisor. Lost keys must be reported immediately to the Public Safety Department. Keys should never be loaned to other staff members or students. Public Safety personnel will confiscate any keys which have not been specifically issued to a particular individual. Unauthorized duplication of college keys is a crime and a violation of college policy.

## COLLEGE PROPERTY

No Camden County College property may be removed from campus without the expressed written permission from the department supervisor. Unauthorized removal of Camden County College property from the campus is a violation of the institution's policy and/or a violation of law

and may be prosecuted by the Camden County College.

## STUDENT/STAFF

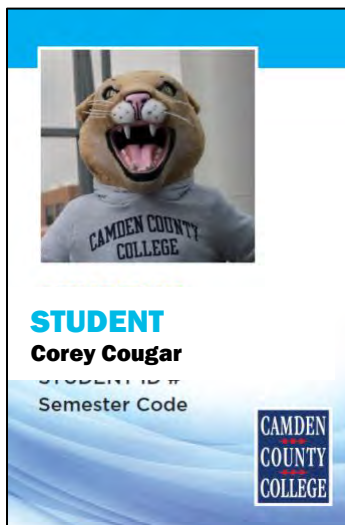
### IDENTIFICATION CARDS

All Camden County College faculty, staff and students taking classes at Camden County College must obtain an identification card. The ID card is your official college identification card and should be with you at all times while on College property. Student ID cards must be validated each semester. You may obtain that validation sticker at any Public Safety Office.

There is a charge of \$5.00 for replacement ID cards. You will need to provide a valid state ID with photo and a current class schedule to obtain a new or replacement ID card.

*In order to obtain a Camden County College identification card the following documents shall be provided:*

- A valid state photo identification card depicting the photograph of the student or staff member requesting the identification card.
- A current copy of your Camden County College class schedule.





# **CAMDEN COUNTY COLLEGE PUBLIC SAFETY DEPARTMENT Access to Campus Facilities**

## **CRIME PREVENTION**

Our goal is to intercept and prevent crimes on campus. Camden County College Public Safety Officers proactively patrol in vehicles, on bicycles and on foot, challenge suspicious persons and circumstances, monitor video surveillance and work closely with local law enforcement agencies. The Public Safety Department supplies crime prevention presentations during new student orientation and takes every opportunity to council the college community on ways to minimize criminal activity on campus.

Camden County College and its Public Safety Department rely heavily on the college community to be alert and proactive. When crimes, potential crimes or another general hazard to the college community is witnessed on campus, Public Safety should be contacted immediately. If you see something, say something! Safety is everyone's job.

## **TIMELY WARNING NOTICES (CAMPUS CRIME ALERTS)**

Camden County College will inform students and staff in a timely manner of any criminal activity, problems or substantial inconveniences which may pose a reasonable threat to their personal safety or the safety of their property, or which may otherwise greatly impact the learning experience. Timely warnings will be posted on the college website, in print form, on campus bulletin boards and in general areas of the college and, in some cases, on

electronic roadside message boards and through the Cougar Call Alert Notification System.

## **EMERGENCY NOTIFICATIONS**

In the event of a College-wide or campus emergency, emergency notifications to the College community will be issued as soon as possible by the Public Safety Department and will be updated as circumstances develop. Emergency notifications will be issued through the following channels:

- College Website, on the homepage. [www.camdencc.edu](http://www.camdencc.edu)
- Cougar Call Alert Notification System via text, email and phone messages.
- KYW-News Radio, 1060AM
- All major news radio and TV stations (when applicable)
- Posted print materials (when applicable)
- Roadside electronic message boards (when applicable)
- By the personal directions of the Public Safety Dept. (when applicable)

## **DAILY CRIME LOG**

The Department of Public Safety maintains a Daily Crime Log that records all crimes and other incidents that occur on campus.

The Daily Crime Log is available for public inspection in the Public Safety Offices on all campuses. The Daily Crime Log includes the nature, date, time, and general location of each crime reported to the Public Safety Department, as well as the disposition of the complaint.



# CAMDEN COUNTY COLLEGE PUBLIC SAFETY DEPARTMENT Health & Safety Awareness



Masks optional indoors



Hand sanitizer stations available



Disinfectant wipes provided

## HEALTH & SAFETY

The health and safety of our students, faculty, staff, and community we serve remain our top priority. Our Return to Campus Plan reflects current recommendations from the CDC's Guidance for Institutions of Higher Education and Governor Murphy's Executive Order 292.

## RETURN TO CAMPUS PLAN

The College is currently operating under Stage 4 of the plan, which is fully open with added safety protocols.

We have instituted enhanced cleaning protocols and improved HVAC systems. Throughout our campus, you'll also find more hand sanitizing dispensers, disinfecting wipes, and hydration stations that have replaced drinking fountains and allow you to safely and conveniently fill your own water bottle.

## CAMPUS ACCESS POLICY

The Campus Access Plan outlines proper access procedures consistent with Stage 4 Full Return to Campus of the Camden County College Return to Campus (RTC) plan approved by the Office of the Secretary of Higher Education. The plan reflects the directive of Governor Murphy's Executive Order No. 242, including safeguarding practices for key on-campus operations and locales. Revised October 5, 2022.

Find a vaccination location near you: <https://covid19.nj.gov/pages/finder>

**For more information, please click on the links below:**

<https://www.camdencc.edu/covid-19-information/>





# **CAMDEN COUNTY COLLEGE PUBLIC SAFETY DEPARTMENT Access to Campus Facilities**

## **WORKPLACE VIOLENCE**

To insure the safety and security of the workplace, Camden County College does not condone any behavior that may be considered potentially violent. Threats and/or threatening behavior, or acts of violence by Camden County College employees against staff members, faculty, students, visitors, or other individuals on Camden County College property or by College employees in the conduct of College business while off campus, are cause for removal from the workplace and may result in discipline and/or termination of employment. The Public Safety Department should be notified immediately if violence in the work place is suspected.

## **CYBERSTALKING**

A form of Stalking in which electronic media, such as the Internet, email, social networks, text messages, cell phones, or other electronic devices are used.

## **DATING VIOLENCE**

Violence committed by a person who is or who has been in a social relationship of a romantic or intimate nature with the victim. The existence of such a relationship will be determined based on the Complainant's statement, and with consideration of the length of the relationship, type of relationship, and frequency of interaction between the persons in the relationship. Dating Violence includes, but is not limited to, sexual or physical abuse or the threat of such abuse.

Dating Violence does not include conduct that constitutes Domestic Violence.

## **DISCRIMINATION**

The treatment of a member of Camden County College less favorably because that person is a member of or associates with a member of a protected class. The College prohibits discrimination on the basis of race, color, religion, sex (including pregnancy), gender identity, sexual orientation, reproductive health decision, national origin, age (over 40), disability (mental or physical), genetic information, marital status, family responsibilities, victim of domestic violence, sexual offense, or stalking, or veteran status, or status as a volunteer emergency responder.

## **VIOLENCE**

Violence committed by a current or former intimate partner of the victim or by any person against a victim who is protected from the person's acts under the domestic or family-violence laws of the jurisdiction in which the act of violence occurred. Domestic Violence includes, but is not limited to, sexual or physical abuse or the threat of such abuse.

## **GENDER-BASED HARRASSMENT**

A form of Sexual Harassment and refers to unwelcome conduct based on an individual's actual or perceived sex, including harassment based on gender identity or nonconformity with sex stereotypes, and not necessarily involving conduct of a sexual nature.



# **CAMDEN COUNTY COLLEGE PUBLIC SAFETY DEPARTMENT Anti-Harassment, Intimidation and Bullying**

## **HOSTILE ENVIRONMENT**

Results from unwelcome conduct that is sufficiently severe, pervasive, or persistent that it interferes with or limits the ability of a member of the College community to participate in, or receive benefits, services, or opportunities from the College's programs or activities.

## **INCAPACITATED**

A state in which an individual cannot make rational, reasonable decisions because the individual lacks the capacity to give knowing Consent (e.g., to understand the "who, what, when, where, why, or how") of his or her sexual interaction. Examples include, but are not limited to, being: unconscious; asleep; voluntarily or involuntarily intoxicated; or use of any drug, intoxicant, or controlled substance. An individual who is incapacitated cannot give Consent.

## **INTERIM MEASURES**

Reasonably available and feasible measures, accommodations, or steps the College may take while a Complaint is pending in order to assist, support, and/or protect the Complainant, Respondent, or another person, and/or to protect the integrity of the investigation and resolution process.

## **NON-CONSENSUAL SEXUAL CONTACT**

Any intentional sexual touching, however slight, with any body part or object, by an individual upon another that is without Consent. Sexual contact includes intentional touching of the individual's anus, breast, buttocks, or genitalia; or any intentional touching of another person with the

Respondent's anus, breast, buttocks, or genitalia.

## **PREPONDERANCE OF THE EVIDENCE**

Based on the evidentiary record, the Respondent more likely than not engaged in the conduct at issue.

## **PROHIBITED CONDUCT**

The conduct prohibited by this Policy, which includes Sexual Misconduct, Complicity, and Retaliation.

## **RELATIONSHIP VIOLENCE**

Dating Violence and Domestic Violence.

## **RESPONDENT**

The person alleged to have engaged in or committed the Prohibited Conduct.

## **RESPONSIBLE EMPLOYEE**

Any College employee, who has the authority to take action to report Sexual Misconduct, has the duty to report incidents of Sexual Misconduct to the Title IX Coordinator, or whom a student reasonably believes has such authority or duty. Responsible Employees do not include Confidential Resource. Responsible Employees include academic administrators, advisors, supervisors, department heads and chairs, deans, student affairs staff, faculty, human-resources personnel, campus-security officers, and athletic coaches. Responsible Employees must promptly report all known relevant information to a Title IX Coordinator, including the name of the Complainant, Respondent, and any witnesses.



# **CAMDEN COUNTY COLLEGE PUBLIC SAFETY DEPARTMENT Access to Campus Facilities**

## **RETALIATION**

Intimidating, threatening, coercing, or in any way discriminating against an individual because the individual filed a Complaint or who participates in the investigation or resolution of a Complaint in any way, or opposes in a reasonable manner an act or policy believed to constitute sex discrimination. For example, Retaliation occurs where a professor gives a student a lower grade because the student appeared as a witness in a proceeding under this Policy, or where a supervisor denies an employee's request for time off because the employee claimed that she was sexually harassed by the supervisor.

## **SEXUAL ASSAULT**

Non-Consensual Sexual Contact, Non-Consensual Sexual Intercourse, and all forms of Sexual Violence that occurs without Consent. Resistance, or the absence thereof, is irrelevant to the determination of whether Sexual Assault has occurred.

## **SEXUAL EXPLOITATION**

Occurs when an individual takes non-consensual or abusive sexual advantage of another for that individual's own advantage or benefit, or to benefit or advantage anyone other than the individual being exploited, and that behavior does not otherwise constitute Sexual Assault.

Examples of Sexual Exploitation include but are not limited to:

- Engaging in voyeurism;

- Exposing one's genitals or inducing another to expose his or her genitals;
- Knowingly transmitting a sexually transmitted infection to another;
- Taking, sharing, or publishing a photograph, video recording, or audio recording of sexual activity without the consent of all persons involved in the activity;
- Going beyond the boundaries of consent (for example, allowing another person to hide in a closet to watch you engage in consensual sex);
- Prostituting another; and
- Possession, use, and/or distribution of alcohol or other drug (e.g., Rohypnol, Ketamine, GHB, Burundanga, etc.) for the purpose of engaging in or facilitating Sexual Misconduct.

## **SEXUAL HARRASSMENT**

Unwelcome conduct of a sexual nature, such as unwelcome sexual advances, requests for sexual favors, and other verbal, nonverbal, or physical conduct of a sexual nature. Harassing conduct may take many forms, including verbal acts and name-calling, as well as non-verbal behavior, such as graphic and written statements, or conduct that is physically threatening, harmful, or humiliating. The more severe the conduct, the less need there is to show a repetitive series of incidents to prove a hostile environment, particularly if the conduct is physical.



# **CAMDEN COUNTY COLLEGE PUBLIC SAFETY DEPARTMENT Access to Campus Facilities**

## **SEXUAL INTIMIDATION**

Threatening behavior of a sexual nature directed at another person and includes threatening to sexually assault another; engaging in indecent exposure; and Stalking.

## **SEXUAL MISCONDUCT**

Sexual Harassment, Sexual Assault, Sexual Exploitation, Sexual Intimidation, Sexual Violence, Relationship Violence, and Stalking.

## **SEXUAL VIOLENCE**

One or more physical sexual acts perpetrated against a person's will or where a person is incapable of giving Consent.

## **STALKING**

Engaging in a course of conduct directed at a specific person that would cause a reasonable person to fear for his or her safety or the safety of others, or to suffer substantial emotional distress. For purposes of this definition, a "course of conduct" means two or more acts, including but not limited to, those in which the alleged perpetrator directly, indirectly, or through third parties, by any action, method, device, or means, follows, monitors, observes, surveils, threatens, or communicates to or about the Complainant, or interferes with the Complainant's property. Stalking includes Cyberstalking.

## **DOMESTIC VIOLENCE**

Domestic Violence includes crimes of violence committed against a victim by: (i) a current or former spouse; (ii) a person with whom the victim shares a child; (iii) a person who is or has cohabitated with the victim as a spouse; (iv) a person similarly situated to a spouse of the victim; or (v) any other person against whom the victim is protected under New Jersey domestic and family violence laws. It is important to recognize that emotional, verbal, and economic abuse are part of the web of domestic violence and can exist without the presence of physical abuse.

### **For more information:**

- **Title IX Coordinator:** Executive Dean, Student Affairs, 856-227-7200, ext. 4371, Taft Hall, Room 233, Blackwood Campus
- **Public Safety:**  
856-374-5089  
**Blackwood** – Ext. 7777  
**Camden** – Ext. 1393  
**Cherry Hill** – Ext. 6057



# CAMDEN COUNTY COLLEGE PUBLIC SAFETY DEPARTMENT Access to Campus Facilities

## CRIME STATISTICS

In accordance with the Clery Act, statistics concerning the occurrence on campus of the following crimes are available for review by the public on the College website:

- Murder
- Manslaughter
- Rape
- Robbery
- Aggravated Assault
- Burglary
- Arson
- Motor Vehicle Theft
- Drug/Alcohol Abuse Violations
- Weapons Possessions
- Hate Crimes/Bias Incidents

The Student Right to Know and Campus Security Act amended FERPA to allow institutions to disclose to the victim of an alleged crime of violence the results of a disciplinary proceeding brought against a student accused of the crime, without the prior consent of the accused. This disclosure is limited to the alleged victim who should be informed that the information might not be disclosed to the public generally (20 USC Section 1232g (b) (6)).

To view Camden County College's Annual Crime Report, visit:

[https://www.camdencc.edu/student\\_life/safety-on-campus/campus-security-report/](https://www.camdencc.edu/student_life/safety-on-campus/campus-security-report/)

## STUDENT RIGHT TO KNOW ACT AND THE CAMPUS SECURITY ACT/CLERY ACT

Student Right to Know Act and the Campus Security Act/Clery Act In accordance with the Student Right to Know and Campus Security Act/Clery Act, the College annually makes available information on graduation, completion and transfer-out rates, as well as information on campus safety and security, including crime statistics. A copy of each report can be found by clicking on the HEOA/Consumer Information link at the bottom of the College's home page at [www.camdencc.edu](http://www.camdencc.edu).

### Jeane Clery Campus Security Policy & Crime Statistics Disclosure Act

Jeane Clery was raped and murdered in her dorm room at Lehigh University in 1986. Her killer was another student. Her parents believe she would have been more cautious if he had known about other violent crimes at Lehigh.





# CAMDEN COUNTY COLLEGE PUBLIC SAFETY DEPARTMENT Crime Prevention/Safety Tips

## PERSONAL SAFETY

- Always close your windows and lock your vehicle.
- Store your valuables and textbooks in the trunk.
- Never leave your personal belongings unattended.
- Thieves target textbooks. Mark your textbooks so they are easily identified. Never leave books or bags unattended.
- Try to walk with a friend. There is safety in numbers.
- Don't walk alone. Instead, contact the Department of Public Safety for an escort.
- Always remain alert and be aware of your surroundings.
- Know where the emergency call boxes are located where you travel.
- Stay within sight of other people whenever possible.
- Have your keys in your hand as you approach your vehicle.
- Safety is everyone's responsibility. Do your part. If you see suspicious activity, notify the Department of Public Safety immediately!

Enter the Department of Public Safety direct number for each Camden County College campus you attend into your cell phone contact list. Better yet: put us on your speed dial. Call us for emergencies, anytime you have a problem, if you see something suspicious or if you just have a question. The Camden County College Department of Public Safety is staffed by well-trained, dedicated people who are able and willing to assist you. Please do not hesitate to report any activity or condition that appears suspicious. Help us to help you and your fellow students in keeping our community safe.





# **CAMDEN COUNTY COLLEGE**

## **PUBLIC SAFETY DEPARTMENT**

### **Safety Inspections**

The College conducts regular inspections of the facilities and grounds to note and correct deficiencies which may exist. The college community is encouraged to report potential hazards to the Department of Public Safety immediately.

#### **FIRE ALARMS**

All Camden County College buildings are equipped with fire alarms. Wall mounted manual pull stations and fire extinguishers can be found throughout all campus facilities. Public Safety personnel routinely patrol all college facilities to ensure the safety of the environment, which includes checking the building alarm panels. All of our Public Safety Officers are trained in the use of fire extinguishers.

In the event of a fire or smoke, the alarm will sound. At the sound of the alarm, all students, employees and visitors are required to evacuate the building immediately. Students are encouraged to remain with their class to permit the professor to take attendance once outside the building. Evacuation routes, assembly areas and emergency information are posted inside of each classroom, office area and throughout all College facilities. If smoke or fire are discovered by a campus community member and the alarm is not sounding, they should pull the nearest wall mounted pull station to activate the alarm

and immediately leave the area, alerting all and advise persons they encounter to evacuate. Once evacuated to a safe assembly location, Public Safety and the fire department should be immediately informed of the location and nature of the hazard.

Public Safety officers will respond to investigate each alarm. Our Officers will ensure that the building is completely evacuated, will contact external agencies for assistance as needed (Fire, Police, and E.M.S.) and respond to the fire alarm panel to determine the cause of the alarm. Public Safety will ensure that no non-essential personnel re-enter an evacuated structure until it is declared safe to do so by the Fire Department. Due to fire code regulations, elevators will be automatically locked out during an active fire alarm. Persons with mobility issues are instructed to take refuge at the nearest handicap area of rescue located by each emergency call box phone. Public Safety Officers are trained to respond immediately to these areas to search for and assist persons with mobility issues. Our Department is trained to use stair chair units to help persons with mobility issues to descend staircases. If you know the location of someone with mobility issues who is inside of a structure in alarm, relay this information to Public Safety and fire dept. personnel as soon as possible.



# CAMDEN COUNTY COLLEGE PUBLIC SAFETY DEPARTMENT Fire Safety

## FIRE SAFETY

When a fire alarm is received the Public Safety Tactical Officer receives the building information and dispatches an officer to that location and the fire company is notified.

The Tactical Officer will deploy and monitor the CCTV for that specific building and location in the building, when possible, to gain a visual of the area to assist the responding Public Safety Officer and to give additional information to the responding emergency units. The Public Safety Officer will conduct



an entry search of the building to verify that all building occupants have evacuated. The responding officers will then read the Fire

Alarm Panel Annunciator located inside the main entry of each of the buildings to determine the specific location of the fire and the device that has tripped the alarm. This could be a smoke or heat detector or a water flow valve which indicates the sprinkler system has been activated.

Each building is equipped with sprinkler systems that are classified as “wet systems.” This means that there is always water present that will be released when the specific sprinkler head is compromised by the fire. All Camden County College facilities and patrol vehicles are equipped with fire extinguishers as required by the fire code. Most of the extinguishers are classified as dry chemical and are rated to extinguish A, B, or C classified fires. A: would be wood or other

combustibles. B: gasoline, or other flammable liquids. C: electrical equipment.

Monthly and annual inspections of fire extinguishers and sprinkler systems are completed under the direction of the College’s Facilities Department. The Camden County Fire Marshal inspects all College-owned facilities on an annual basis.

All classrooms and large meeting rooms at Camden County College facilities have Emergency Exit Egress signs posted to facilitate the safe evacuation of facilities that show a primary or secondary route to follow. The information concerning how to respond to various emergencies on campus are delineated in the Emergency Information quick reference poster that is available in each classroom. We also encourage the faculty to relate this information to their students at the beginning of the semester. Camden County College also conducts building evacuation drills annually.

All fire safety issues will be handled in a timely manner. Specific fire safety procedures are put in place by the Public Safety Department when a safety problem is identified to ensure the Camden County College community’s safety is not compromised during this time. This is accomplished by:

- Increasing patrol activity at the specific location.
- Making sure the CCTV is monitored by the Tactical Officer.
- Informing all college employees of the problem so they can make the appropriate notification to the Public Safety Department if they observe any safety issues.





# **CAMDEN COUNTY COLLEGE PUBLIC SAFETY DEPARTMENT Policy Prohibiting Sexual Contact and Harassment, Sexual Violence, Relationship Violence and Stalking**

## **POLICY #340**

Camden County College is an institution of higher learning that is also a community resource which lends itself to the development of people of all ages. It is committed to providing its sites and facilities as places conducive to intellectual and mindful education and personal mental development. It strives to be a place that sets an example as a haven for education and students at all levels. It furthers this goal by providing an atmosphere free of any form of sexual pressures or influences. To that end it prohibits any sexual contact of any kind at any sites or in any of its programs.

Camden County College shall provide a work and academic environment free of harassment, sexual or otherwise, sexual or relationship violence, stalking or violence of any kind. The College prohibits all forms of harassing conduct, including but not limited to sexual harassment. This is true whether by peers, visitors, vendors or supervisory personnel. Harassment is prohibited by and against students, staff and visitors regardless of gender or gender identity, same sex harassment, and harassment based on sexual orientation.

No one shall threaten or insinuate, either explicitly or implicitly, that an individual's refusal to submit to sexual advances will adversely affect his or her employment, academic progress, evaluation, wages, advancement, assigned duties or any other condition of student development,

employment or career development. Nor shall any official, teacher, supervisor, co-worker or fellow student favor any individual in any way because that individual has submitted or has shown a willingness to submit to sexual overtures or advances.

Any individual who is found, after appropriate investigation, or conviction, to have engaged in conduct prohibited by this Policy will be subject to whatever disciplinary or corrective action Camden County College considers appropriate under the circumstances, up to and including termination of employment or student dismissal or prohibition from College property.

### **Provisions**

1. Sexual contact is defined as physical contact with or the display of any person's genitalia or private parts regardless of age or consent.
2. Harassment is defined as:
  - a. Make, or cause to be made, a communication or communications anonymously or at extremely inconvenient hours, or in offensively coarse language, or any other manner likely to cause annoyance or alarm which the person knows is unauthorized, unwanted or unconsented; or
  - b. Subjects another to striking, kicking, shoving, or other offensive touching, or threatens, to do so; or



# **CAMDEN COUNTY COLLEGE PUBLIC SAFETY DEPARTMENT Policy Prohibiting Sexual Contact and Harassment, Sexual Violence, Relationship Violence and Stalking**

- c. Engages in any other course of alarming conduct or of repeatedly committed acts with purpose to alarm or annoy such other person.
- 3. Sexual harassment includes, but is not limited to,
  - a. Sexual advances, requests for sexual favors, and other verbal or physical conduct of a sexual nature when:
  - b. Submission to such conduct is made either explicitly or implicitly a term or condition of an individual's employment;
  - c. Submission to or rejection of such conduct by an individual is used as the basis for employment decisions affecting such individual; or
  - d. Such conduct has the purpose or effect of unreasonably interfering with an individual's work performance or creating an intimidating, hostile or offensive working environment; or
  - e. Such verbal or physical conduct interferes with an individual's work, professional or academic performance, productivity, physical security, extracurricular activities, academic or career opportunities, or other services.
- 1. Unwelcome sexual flirtations, touching, advances or propositions;
- 2. Slurs or other verbal abuse of a sexual nature;
- 3. Graphic or suggestive comments about an individual's dress or body;
- 4. Sexual degrading words to describe an individual;
- 5. The display at the College or by way of college media or equipment in the workplace of sexually suggestive objects or pictures;
- 6. Off-color language or jokes of a sexual nature;
- 7. Asking question regarding an individual's sexual conduct, orientation, or preferences;
- 8. Physical assault. (Any criminal sexual assault will be addressed in compliance with the Camden County College Sexual Assault Policy.)

Other sexually harassing conduct in the workplace, whether committed by students, peers, staff or supervisors, includes, but not limited to:

The College's policy to provide a work and academic environment free of any sexual contact as well as sexually harassing, sexual violence, relationship violence and stalking conduct extends to the conduct of students, vendors, contractors, visitors, volunteers, and other persons who enter upon College property. No such person may engage in sexually harassing conduct, as defined in this policy, while on College premises or while engaged in any College-sponsored activity or function.



# CAMDEN COUNTY COLLEGE PUBLIC SAFETY DEPARTMENT Policy Prohibiting Sexual Contact and Harassment, Sexual Violence, Relationship Violence and Stalking

No Trustee, officer, faculty member, student or employee of Camden County College is authorized to engage in any activity, to take any action, or to refrain from taking any action, if the action or failure to act will result in a violation of this policy. Any such action or failure to act is a violation of College policy, and constitutes unauthorized action/inaction on the part of the Trustee, officer, faculty member, student or employee involved.

If you are the victim of a sexual assault at your first priority should be to get to a place of safety. You should then obtain necessary medical treatment. The Public Safety Department strongly advocates that any individual who feels he or she has been subject to or who witnesses sexual harassment should report such a complaint to the Title IX Coordinator: Executive Director of Public Safety & RETC, Blackwood Campus (856) 227-7200, ext. 4288; or the Executive Dean of Student Affairs, Taft Hall, Office 233, Blackwood Campus (856) 227-7200 ext. 4371. Additionally, Camden County College recommends that a victim of sexual assault report the crime to the local

law enforcement agency for the applicable municipality.





# **CAMDEN COUNTY COLLEGE PUBLIC SAFETY DEPARTMENT Policy Prohibiting Sexual Contact and Harassment, Sexual Violence, Relationship Violence and Stalking**

## **ANTI-HARASSMENT, INTIMIDATION AND BULLYING POLICY**

Camden County College shall provide an academic environment free of harassment, intimidation and bullying, and prohibits any acts of harassment, intimidation, or bullying on any Camden County College property, or at any function sponsored by Camden County College. The College defines harassment, intimidation and bullying as any gesture, any written, verbal, or physical act, or any electronic communication (cyber bullying/stalking), whether it be a single incident or a series of incidents, that is reasonably perceived as being motivated either by any actual or perceived characteristic, such as race, color, religion, ancestry, national origin, gender, sexual orientation, gender identity, gender expression, or a mental, physical or sensory disability, or by any other distinguishing characteristic, when these behaviors substantially disrupt or interfere with the orderly operation of the institution or with the rights of students and other constituencies. The College further holds that these behaviors constitute harassment, intimidation, or bullying when a reasonable person should know under the circumstances that they:

1. Will have the effect of physically or emotionally harming another person or damaging that person's property, or of placing them in reasonable fear of physical or emotional harm to his/her person or damage to his/her property;
2. Will have the effect of insulting or demeaning any student or group of students or College employees or constituencies; or

3. Create a hostile educational environment for a student; or
4. Infringes on the rights of a student at Camden County College
5. by interfering with a student's education or by severely or pervasively causing physical or emotional harm to a student.

Students who engage in acts of harassment, intimidation or bullying are subject to disciplinary action as outlined in the Student Handbook, up to and including expulsion from the College. Copies of this policy shall be posted on the College's website.

Visitors who engage in these acts are subject to penalties as determined by the College and law enforcement officials with jurisdiction over the location in which the offense occurs.

Employees who engage in these acts are subject to disciplinary action including termination of employment as outlined in the College's policies on Code of Conduct, Acceptable Use of Technology, Diversity and Civility, Sexual Harassment, and to penalties as determined by any applicable laws.



# **CAMDEN COUNTY COLLEGE PUBLIC SAFETY DEPARTMENT Policy Prohibiting Sexual Contact and Harassment, Sexual Violence, Relationship Violence and Stalking**

## **SEX DISCRIMINATION AND SEXUAL HARASSMENT POLICIES**

### **Title IX Policy and Procedures for Student Sex Discrimination**

Camden County College is an institution of higher learning that is also a community resource which lends itself to the development of people of all ages. It is committed to providing its sites and facilities as places conducive to intellectual and mindful education and personal mental development. It strives to be a place that sets an example as a haven for education and students at all levels. It furthers this goal by providing an atmosphere free of any form of sexual pressures or influences. To that end, it prohibits any sexual contact of any kind at any sites or in any of its programs.

Camden County College shall provide a work and academic environment free of harassment, sexual or otherwise, sexual or relationship violence, stalking or violence of any kind. The College prohibits all forms of harassing conduct, including but not limited to sexual harassment. This is true whether by peers, visitors, vendors or supervisory personnel. Harassment is prohibited by and against students, staff and visitors regardless of gender or gender identity, same sex harassment, and harassment based on sexual orientation.

For more information, please visit:  
<https://www.camdencc.edu/title-ix/>

### **What is Title IX?**

Title IX is a federal civil rights law passed as part of the Education Amendments of 1972. This law protects people from discrimination based on sex in education programs or activities that receive Federal financial assistance. Title IX states that:

No person in the United States shall, on the basis of sex, be excluded from participation in, be denied the benefits of, or be subjected to discrimination under any education program or activity receiving Federal financial assistance.

Title IX applies to any institution receiving federal financial assistance from the Department of Education, including state and local educational agencies. Educational programs and activities that receive federal funds from the Department of Education must operate in a nondiscriminatory manner. Also, a recipient may not retaliate against any person for opposing an unlawful educational practice or policy, or because a person made charges, testified or participated in any complaint action under Title IX.

## **CAMDEN COUNTY COLLEGE'S SEXUAL HARASSMENT POLICY**

**[Policy #340 – Prohibiting Sexual Contact & Harassment, Sexual Violence,  
Relationship Violence and Stalking](#)**





# **CAMDEN COUNTY COLLEGE PUBLIC SAFETY DEPARTMENT Policy Prohibiting Sexual Contact and Harassment, Sexual Violence, Relationship Violence and Stalking**

For more information:

**Title IX Coordinator**  
Executive Dean of Student Affairs  
Taft Hall, Office 233 – Blackwood Campus  
Phone: 856-227-7200, Ext. 4371  
Email: [adalyeimer@camdencc.edu](mailto:adalyeimer@camdencc.edu)

If you need to report a violation in-person or online, please or more information, please visit our website at:

<https://www.camdencc.edu/title-ix/>









# CAMDEN COUNTY COLLEGE PUBLIC SAFETY DEPARTMENT Sexual Assault Prevention & Awareness

## TITLE IX

UNDERSTANDING DOMESTIC &  
SEXUAL VIOLENCE,  
DISCRIMINATION AND HARASSMENT



### DON'T BE SILENCED! SPEAK UP AND WE WILL LISTEN!

Resources and reporting options are available, if you or someone you know at Camden County College has been a victim of:

- Sexual Assault
- Domestic Violence
- Dating Violence
- Stalking
- Discrimination or Harassment

### RESOURCES AND REPORTING OPTIONS

If an incident occurs to you or you know of an incident, please immediately contact at least one of the following:

**Department of Public Safety**  
(856) 374-5089

**Student Services**  
(856) 227-7200, ext. 4371

Camden County College does not discriminate in admissions or access to, or treatment or employment on the basis of race, color, national origin, sex, disability, or age in its programs and activities. The following persons have been designated to handle inquiries/complaints regarding non-discrimination policies:

**Title IX Coordinator:** Executive Dean, Student Affairs, 856-227-7200, ext. 4371, Taft Hall, Room 233, Blackwood Campus

**Deputy Title IX and ADA Coordinator for Employees:** Assistant Director of Human Resources, 856-227-7200, ext. 4391, Roosevelt Hall, Room 106, Blackwood Campus

**Deputy Title IX and Section 504 Coordinator for Students:** Associate Dean of Students, 856-227-7200, ext. 5088, Taft Hall, Room 302, Blackwood Campus

**Title II for Employees and Students:** Building Operations Manager, 856-227-7200, ext. 4575, Physical Plant, Blackwood Campus  
Students and employees have the legal right to appeal grievances with the local Office for Civil Rights, New York Office for Civil Rights, U. S. Department of Education, 32 Old Slip, 26th Floor, New York, New York 1005-2500, Telephone 646-428-3900, Fax: 646-428-3843; Tdd: 800-877-8339, EmaOCR.Newyork@Ed.Gov



camdenc.edu



# **CAMDEN COUNTY COLLEGE PUBLIC SAFETY DEPARTMENT Sexual Assault Prevention & Awareness**

## **Camden County Police Department**

800 Federal St.  
Camden, NJ 08103  
(856) 757-7440

## **Cherry Hill**

### **Police Department**

820 Mercer Street  
Cherry Hill, NJ 08002  
(856) 488-7828

## **Gloucester Township Police Department**

1261 Chews Landing Road  
Laurel Springs, NJ 08021  
(856) 228-4500

The Public Safety Department can facilitate notification of the law enforcement agency on your behalf, if that is your wish. Filing a report will not necessarily obligate a victim of sexual assault to prosecute the crime. However, filing a report will ensure that a victim of sexual assault has access to necessary medical treatment and tests. This treatment will also provide the opportunity for collection of evidence helpful in prosecution. Time is a critical factor for evidence collection and preservation. In addition, reporting the crime will assure a victim of sexual assault has access to confidential counseling from individuals specifically trained in the area of sexual assault crisis intervention.

A Camden County College representative from the Public Safety Department or Student Affairs can guide a victim of sexual assault through the reporting options available to them. The victim of a sexual assault may choose for the investigation to be pursued through the criminal justice system and the Camden County College Student Code of Conduct, or only the latter. Both the victim of a sexual assault and the accused will be informed of the outcome of the relevant Student Code of Conduct hearing. A student found to have violated the Student Code of Conduct regarding sexual assault may be expelled from the College. Camden County College disciplinary proceedings are detailed in the Student Handbook which can be found online at the college's website. **The Public Safety Department urges all students to review the Student Handbook which has a section titled Campus Sexual Assault and Victim's Bill of Rights.**

**For additional information please visit:**

<https://www.camdencc.edu/about-1/college-publications/#catalog>

CCC Student Handbook – page 9



# **CAMDEN COUNTY COLLEGE PUBLIC SAFETY DEPARTMENT Sexual Assault Prevention & Awareness**

## **PREVENTION AND AWARENESS:**

### **HOW TO MINIMIZE YOUR CHANCE OF BEING SEXUALLY ASSAULTED**

Be assertive. No one has the right to do anything you don't want him or her to do. There is nothing "polite" about RAPE. If he/she will not respect your wishes, leave. Be clear about your sexual limits and communicate them clearly. Do not hesitate to scream, yell, kick, and run. Do whatever it takes for you to free yourself from your attacker.

Alcohol and drugs can play a part in acquaintance/date rape. It's hard to express yourself clearly when you are not thinking clearly. You may not recognize a bad situation until it's too late. If you are incapacitated due to the use of drugs or alcohol, you may not be able to protect yourself.

Trust yourself. If you feel scared or intimidated that you might be in a dangerous situation, you are probably right. Don't wait until something happens. Leave immediately! Knowledge is power.

### **ARE YOU LIKELY TO COMMIT A SEXUAL ASSAULT?**

Never assume. Forced sex is never justifiable. "No" does not mean, "Yes." Having sex in the past does not guarantee sex now or in the future. Flirting or suggestive behavior is no guarantee that sex will occur.



Start listening. Respect the person you're with. If you think you are getting a double message from the person you are with, speak up and ask for an explanation. Abide by the answer you get. Sexual excitement does not justify forced sex. Desires may be uncontrollable, but your actions are not. Ask yourself if sex right now is worth going to jail over later?

Being drunk or high is no excuse. Intoxication is not a legal defense for sexual assault. Each and every one of us is responsible for our actions, drunk or sober. If the person you are with is passed out or not in control, it is a crime to have sex with her or him.



# **CAMDEN COUNTY COLLEGE PUBLIC SAFETY DEPARTMENT Sexual Assault Prevention & Awareness**

## **MEGAN'S LAW NOTIFICATION**

On October 31, 1992, the State of New Jersey enacted a series of laws which provide that the community be notified of the presence of certain sex offenders. As stated in the above heading, they are commonly referred to as "Megan's Law," marking the first mandatory notification system in the country.

This law requires that the Prosecutor's Office in the county in which the offender resides, classify an offender into one of three categories.

- Low Risk – Tier One (for Recidivism)
- Moderate Risk – Tier Two (for Recidivism)
- High Risk – Tier Three (for Recidivism)

Upon review by a Superior Court Judge, the offender may be placed in one of the classifications and notification plan, at which time, notification may occur. Additional information on sex offender community notifications and how to handle notifications within your organization can be found on the New Jersey Attorney General's website:

[www.state.nj.us/lps/dcj/megan/meganguidelines1-05.pdf](http://www.state.nj.us/lps/dcj/megan/meganguidelines1-05.pdf)

The federal Campus Sex Crimes Prevention Act requires institutions of higher education to issue a statement advising the campus community where information concerning registered sex offenders may be obtained.

## **THE FAMILY EDUCATIONAL RIGHTS AND PRIVACY ACT:**

### **THE BUCKLEY AMENDMENT**

Camden County College is in full compliance with the Family Educational Rights and Privacy Act of 1974, as amended (FERPA). This act was designed to protect the privacy of student educational records, to establish the rights of students to inspect and review their educational records, to provide guidelines for the correction of inaccurate or misleading data, except grades, and to permit students to control disclosure of their educational records, with certain exceptions.

A copy of the FERPA regulations is on file in the offices of the Registrar, Public Safety Department and the Associate Dean of Student Services. Students also have the right to file complaints with FERPA, Office of the Department of Education, Washington, DC 20202, regarding alleged violations of the act.

## **THE FAMILY EDUCATIONAL RIGHTS AND PRIVACY ACT:**

### **Disclosure to Parents**

When a student turns 18 years old or enters a post-secondary institution at any age, all rights afforded to parents under FERPA transfer to the student. However, FERPA also provides ways in which schools may share information with parents without the student's consent. For example:

- Schools may disclose education records to parents/ guardians if the student is a dependent for income tax purposes.
- Schools may disclose education records to parents/ guardians if a health or safety emergency involves their son or daughter.

- Schools may inform parents/guardians if the student who is under the age of 21 has violated any law or its policy concerning the use or possession of alcohol or a controlled substance.



# CAMDEN COUNTY COLLEGE PUBLIC SAFETY DEPARTMENT NJ State Right-To-Know

## NJ STATE RIGHT-TO-KNOW (HAZARDOUS SUBSTANCES)

Camden County College has a central Right-To-Know file in the Public Safety Office, Blackwood Campus Conference Room and via a web-based filing system.

*This information includes:*

1. Material safety data sheets from manufacturers on their products used at Camden County College.
2. Hazardous substance fact sheets from the NJ Department of Health and Senior Services (NJDHSS) on substances (not products) deemed hazardous by the state.
3. A copy of the current Camden County College Right-To-Know survey.

*This information is available to all employees of Camden County College and to others upon request*

4. Hazard Communications Standard Policy.

The Right-To-Know report and hazardous substance fact sheets are also available from the Public Safety Department. This officer can also help in locating information or resources for chemical/hazard questions. The Safety Officer may be reached at (856) 374-5089.



**Material  
Safety  
Data  
Sheet**



# CAMDEN COUNTY COLLEGE PUBLIC SAFETY DEPARTMENT NJ State Right-To-Know

## YOU HAVE THE RIGHT TO KNOW



ABOUT HAZARDOUS SUBSTANCES IN YOUR  
WORKPLACE AND COMMUNITY



Division of Epidemiology,  
Environmental and Occupational Health  
Right to Know Program

# CAMDEN COUNTY COLLEGE

# PUBLIC SAFETY DEPARTMENT NJ State Right-To-Know

## YOU HAVE THE RIGHT TO KNOW



ABOUT HAZARDOUS SUBSTANCES IN YOUR  
WORKPLACE AND COMMUNITY



Division of Epidemiology,  
Environmental and Occupational Health  
Right to Know Program

### HOW TO OBTAIN INFORMATION

You can obtain copies of the *Right to Know Survey*, *Community Right to Know Survey*, and Hazardous Substance Fact Sheets from your designated *Right to Know* county agency listed below:

Atlantic.....	(609)645-5971	Ext. 4395
Bergen.....	(201)634-2786	
Burlington.....	(609)285-5515	
Camden.....	(856)374-6046	
Cape May.....	(609)465-1208	
Cumberland.....	(856)453-2156	
Essex.....	(973)228-8152	
Gloucester.....	(856)262-4200	
Hudson.....	(201)223-1133	
Hunterdon.....	(908)236-7111	
Mercer.....	(609)989-6497	
Middlesex.....	(732)745-3100	
Monmouth.....	(732)431-7456	
Morris.....	(973)285-6113	
Ocean.....	(732)341-9700	Ext. 7431
Passaic.....	(973)225-3651	
Salem.....	(856)935-7510	Ext. 8489
Somerset.....	(908)231-7000	Ext. 7506
Sussex.....	(973)579-0370	
Union.....	(908)654-9890	
Warren.....	(908)689-6693	

**YOU HAVE A  
RIGHT TO KNOW  
ABOUT HAZARDOUS  
SUBSTANCES  
IN YOUR  
WORKPLACE AND  
COMMUNITY.  
USE IT.**

The following three agencies work together to implement the *Worker and Community Right to Know Act*:

*New Jersey Department of Health and Senior Services*  
*Right to Know Program*  
PO Box 368  
Trenton, NJ 08625-0368  
(609) 984-2202  
[www.state.nj.us/health/eoh/rtkweb](http://www.state.nj.us/health/eoh/rtkweb)

Enforces all provisions of the *RTK Act* in public workplaces and *RTK* labeling in private workplaces. The Program prepares Hazardous Substance Fact Sheets, the *RTK* brochure, and other materials to increase awareness of hazardous chemicals and help employers comply with the *RTK Act*. Printed materials are available upon request. Many are translated into Spanish.

*New Jersey Department of Environmental Protection*  
*Office of Pollution Prevention and Right to Know*  
PO Box 405  
Trenton, NJ 08625-0405  
(609) 292-6714  
[www.nj.gov/dep/opppc/crtk/](http://www.nj.gov/dep/opppc/crtk/)

Enforces the community provisions of the *RTK Act* in the private sector (except for labeling). The Department is also responsible for implementing Title III (Emergency Planning and *Community Right to Know*) of the federal Superfund Amendments and Reauthorization Act (SARA), which establishes requirements for industry regarding emergency planning and reporting of hazardous chemicals.

*New Jersey Department of Labor and  
Workforce Development*  
*Office of Public Employees Occupational Safety and  
Health*  
PO Box 386  
Trenton, NJ 08625-0386  
(609) 292-7036  
[www.nj.gov/labor/lssse/lspeosh.html](http://www.nj.gov/labor/lssse/lspeosh.html)

Collects *RTK* fees from private employers and investigates complaints by public employees who suspect they are being discriminated against for exercising their rights under the *RTK Act*.

15.04

H5221





# CAMDEN COUNTY COLLEGE PUBLIC SAFETY DEPARTMENT NJ State Right-To-Know

## THE RIGHT TO KNOW ACT

The New Jersey Worker and Community *Right to Know* Act requires public and private employers to provide information about hazardous substances at their workplaces. The Act:

- ❑ informs public employees about chemical hazards at their workplace so they can work safely with these hazardous substances;
- ❑ helps firefighters, police, and other emergency responders adequately plan for and respond to incidents such as fires, explosions or spills;
- ❑ provides data for monitoring and tracking hazardous substances in the workplace and the environment.

## HOW THE ACT CAN PROTECT YOU AND YOUR FAMILY

Harmful substances may be present at your workplace and at other workplaces in your community, or may be released into the environment. They may also be carried home to your family on your work clothes.

Hazardous substances can cause irritation to the eyes, skin, and respiratory tract. Exposure to hazardous substances has been linked to health problems such as cancer, birth defects, and heart, lung and kidney diseases. These diseases may develop many years after exposure. *As a public employee, you can obtain information about hazardous substances that may harm you or your family from documents in your workplace's Right to Know (RTK) central file.*

Knowing about hazardous substances and how they harm you can help you obtain the proper diagnosis and treatment if you should become sick. More importantly, awareness about hazardous substances and your potential exposure to them can help you make important decisions about your employment.

## HOW THE ACT WORKS

Employers covered by the Act must complete surveys listing the names and amounts of hazardous chemicals stored and used at their workplaces.

*Right to Know Surveys* are completed by public agencies and sent to the New Jersey Department of Health and Senior Services (NJDHSS).

*Community Right to Know Surveys* are completed by private employers and sent to the New Jersey Department of Environmental Protection (NJDEP).

*Copies of these surveys are required to be sent to local fire and police departments, designated Right to Know county agencies (mostly county health departments), and local emergency planning committees.*

Public employers are required to label containers according to the New Jersey *Right to Know* Act and PEOSHA, and maintain a *RTK* Central File that contains information about hazardous substances at their facilities. Private employers are required to label containers according to OSHA and the New Jersey *Right to Know* Act.

## HOW PUBLIC EMPLOYERS COMPLY WITH THE RIGHT TO KNOW ACT

Public employers have the responsibility to assist workers in learning about the hazards of the products they work with. The employer must:

- ✓ Complete the *Right to Know Survey*
- ✓ Label Containers
- ✓ Create and Maintain a *Right to Know* Central File
- ✓ Post the *Right to Know* Poster.

Public employees can obtain a copy of the survey by contacting their employer, the NJDHSS, or the designated county agencies at the numbers listed in this brochure.

## HOW TO USE YOUR WORKPLACE RIGHTS TO PROTECT YOUR HEALTH

The *Right to Know* Act gives employees certain rights and access to information about hazardous chemicals in their workplace. This information, kept in the *RTK* central file, informs workers about the health hazards of chemicals and ways to reduce or prevent their exposure to the chemical hazards. *Learn to work safely with chemical hazards to protect your health and the health of your family members.* To do so:

1. Work only with labeled containers.
2. Check your workplace *RTK* Survey to find out which products contain hazardous chemicals.
3. Read Material Safety Data Sheets and Hazardous Substance Fact Sheets about the health hazards of the hazardous chemicals in the products. These documents are kept in the *RTK* central file.

You do not have to work with a product if your employer has not given you the ingredient information you requested in writing within five working days. **Call the NJDHSS** for more information **before** you refuse to work with a product.

You can file a complaint against your employer for not complying with the *RTK* Act. Your **name will be kept confidential**.

This brochure is being distributed to you as part of your training about hazardous chemicals in the workplace under the PEOSH Hazard Communication Standard. For more information about training, contact the Public Employees Occupational Safety and Health (PEOSH) Program, New Jersey Department of Health and Senior Services, P. O. Box 360, Trenton, NJ 08625-0360, (609) 964-1863, [www.nj.gov/health/eoh/pecshweb](http://www.nj.gov/health/eoh/pecshweb).



# **CAMDEN COUNTY COLLEGE PUBLIC SAFETY DEPARTMENT Traffic & Parking Regulations**

Motor vehicles privately owned and operated on Camden County College property by students, staff and faculty must be registered with the Public Safety Department. The Public Safety Department will issue a parking decal as evidence of campus registration. Should a student, staff or faculty member need to temporarily park a vehicle on campus other than the vehicle registered with the Public Safety Department, the individual must immediately report to the Public Safety Department and a temporary parking pass will be issued. Failure to comply may result in a citation. Please provide your driver's license, state vehicle registration and a copy of your current schedule when obtaining a parking decal. Students and visitors must park in the spaces designated with white lines only. Spaces with yellow lines are designated for the use by faculty and staff only. Any person who violates this policy shall be issued a summons by the Department of Public Safety.

## **TRAFFIC REGULATIONS**

- There is a posted 10 MPH speed limit on the Blackwood, Lakeland and Cherry Hill campuses.
- All road signage and detours must be observed on campus.
- Drivers must come to a complete stop at all intersections, including at the end of parking lot rows (legally, this type of intersection is termed an "implied stop").
- Never talk or text on a cellular phone while operating your vehicle.
- All state and local motor vehicle laws apply while on Camden County College property.
- Drivers are never permitted to park in fire lanes or bus lanes.

## **DECALS**

- Required for all students and staff parking on Camden County College campuses.
- Decals are available, free of charge, in the Public Safety offices on the Blackwood, Camden and Cherry Hill campuses.
- Decals must be clearly displayed on the vehicle when parked on any of the Camden County College campuses.
- Student and faculty decals are marked and valid for two (2) calendar years.
- Students and faculty may register multiple vehicles, free of charge.





# CAMDEN COUNTY COLLEGE PUBLIC SAFETY DEPARTMENT Traffic & Parking Regulations

## PARKING

- All student and staff vehicles must display valid parking decal when parked on campus.
- Students are permitted to park in spaces lined with white paint only.
- Spaces lined with yellow paint are for faculty and staff members only.
- Parking is not permitted on roadways, fire zones, bus loading zones, designated restricted areas or on non-designated grass areas.
- Faculty and students with valid handicap parking plates or placards must register their plate/placard number and present their current state issued handicap identification card to the Public Safety office. The Public Safety office will maintain a list of registered Handicap motorists. This is done in an effort to identify and stop persons who may be using the plates/placards of another person, or an expired plate or placard, in order to take advantage of handicap parking.
- Unauthorized overnight parking is prohibited on all campuses. Such vehicles discovered on campus after hours are subject to citation and towing at the owners expense. Disabled vehicles must be immediately reported to the Public Safety department for authorization for overnight parking and every effort must be made by the owner to remove the vehicle from campus as soon as possible, but in all cases, within 24 hours.
- A brochure listing all campus traffic and parking regulations are attached to every parking decal issued to students, faculty and staff.
- All parking and traffic regulations can be viewed on the college website at <https://camdencc.edu/student-life/student-services/i-d-cards/>.

The Military Order  
of the

*Purple  
Heart*



The Purple Heart parking sign is located in parking lot 5 at the Blackwood Campus. The parking spot, painted purple and white, is reserved for those who have received a Purple Heart medal while serving in the U.S. military. It is the College's way to honor our veterans who have done so much for us and our Country.



## **DON'T TEXT and DRIVE**

People who text and drive are 23 times more likely to have an accident, according to a recent study by the Virginia Tech Transportation Institute.

**STAY ALIVE...Don't Text and Drive.**



# CAMDEN COUNTY COLLEGE PUBLIC SAFETY DEPARTMENT Traffic & Parking Regulations

## PARKING CITATIONS

Students, staff and faculty shall be liable for fines and violations listed below:

- Improper/no display of decal/permit ..... \$25.00
- Parked in employee/reserved space ..... \$25.00
- Improper parking (Define) ..... \$25.00
- Parked in handicapped space ..... \$100.00
- Parked in fire zone ..... \$25.00
- Careless driving ..... \$25.00
- Driving off roadway. ....\$25.00
- Entering controlled area ..... \$25.00
- Smoking policy .....\$25.00/\$50.00
- Littering ..... \$25.00

## APPEALS ON VIOLATIONS

All issued citations can be appealed within seven (7) days of the issue date. There is no fee to register an appeal. Violators can fill out an appeal form in the Public Safety office of each campus. Appeals are reviewed and ruled on by the appeals board. The appeal board is comprised of College employees and administrators. No member of the Public Safety Department serves on the appeal board. Persons with citations in the appeal process are not required to pay the prescribed violation fine until a decision is rendered by the appeal board.

**IF YOU WITNESS A MOTOR VEHICLE ACCIDENT WHILE ON CAMPUS, PLEASE CONTACT THE PUBLIC SAFETY DEPARTMENT OR THE LOCAL POLICE DEPARTMENT IMMEDIATELY.**

**The Public Safety Department reserves the right to tow vehicles at the owner’s expense for violation of the parking policy or creating a hazard to others.**





# CAMDEN COUNTY COLLEGE PUBLIC SAFETY DEPARTMENT Vehicle Safety

- Close all windows, lock all doors, and take the keys with you.
- Never hide a second set of keys anywhere on your car.
- Never leave your car's engine running, even if you will only be gone for a minute.
- Park in well-lit areas.
- Don't leave packages or valuables in plain sight in your car; keep them in your trunk
- Activate any anti-theft devices you have.
- Push or recline your passenger seat forward; if you return to your car and the passenger seat has been returned to its normal position, chances are someone has entered your vehicle.
- When approaching your vehicle, have your keys in hand.
- Before you invest in any alarms, check with several established companies and decide what level of security fits your needs.





# CAMDEN COUNTY COLLEGE PUBLIC SAFETY DEPARTMENT

## Procedures for Reporting a Crime, Incident or Emergency on Campus

Camden County College community members, students, faculty, staff and guests are encouraged to report all crimes, suspicious persons and any other safety related incidents to the Public Safety Department in a timely manner. In all instances the Public Safety Department will take the required action. However, members of the Public Safety Department are not police officers and do not possess police powers. If the situation warrants police action, or if the individual reporting the matter makes a request, the Public Safety Department will contact the applicable municipal police department.

A Public Safety Officer can be reached at the following:

<b>Blackwood Campus</b>	(856) 227-7200
Direct Dial to Public Safety	(856) 374-5089
Blackwood Emergency	ext. 7777
Public Safety, Information	ext. 4288
<b>Camden City Campus</b>	(856) 338-1817
Direct Dial to Public Safety	(856) 968-1393
Emergency	ext. 1393
Public Safety, Information	ext. 1393
<b>Rohrer Center</b>	(856) 874-6000
Direct Dial to Public Safety	(856) 874-6057
Emergency	ext. 6666
Public Safety, Information	ext. 6057
<b>RETC</b>	(856) 874-6004
Direct Dial to Public Safety	(856) 374-5089
Emergency	ext. 7777

There are several Public Safety Concierge Information Desks and emergency call-box phones located throughout the campus. The

Public Safety Department can be contacted by dialing the appropriate extension or directly on an emergency call-box phone. The Public Safety Department recommends pre-programming the applicable telephone numbers into your cell phone. Crimes, incidents or emergencies may also be reported anonymously to the Public Safety Department by calling (856) 374-5089.

All Camden County College incident reports are forwarded to the Executive Staff of Public Safety for their review and potential follow-up action. Incident reports indicating a violation of the Student Code of Conduct are forwarded to the Associate Dean of Student Affairs for possible action.

Crimes, incidents and/or emergencies should be reported the Public Safety Department to ensure inclusion in the annual crime statistics and to aid in providing timely warning notices to the community, when appropriate. This publication contains information about on-campus and off-campus resources.

The Public Safety Department is responsible for preparing and distributing this report. The Public Safety Department works with many other departments and agencies, such as the Office of the Associate Dean of Student Services and local police departments to compile the information. We encourage members of the college community to use this report as a guide for safe practices on campus. It is available on the college website at [CCC.edu/public\\_safety](http://CCC.edu/public_safety).

### **ANNONYMOUS TIP LINE:**

**(856) 374-4907**

**To report information regarding  
campus incidents.**



# CAMDEN COUNTY COLLEGE PUBLIC SAFETY DEPARTMENT Additional Services



## PERSONAL PROPERTY

Camden County College will not assume responsibility for the loss, theft or damage of students', staff members' and visitors' personal property brought on campus. If loss, theft or damage does occur, notify the Public Safety Department immediately.

## LOST AND FOUND PROPERTY

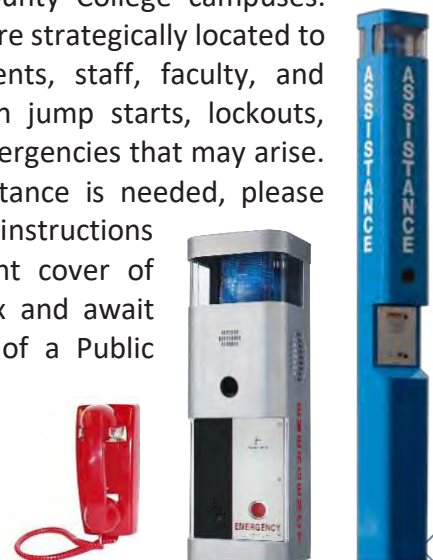
The Department of Public Safety maintains a "Lost and Found" service at all campuses. Found property is held for 90 days. All reasonable attempts are made to locate the owner of the property turned into the "Lost and Found". Property not claimed within 90 days is disposed of or donated to charitable causes.

Please contact the Department of Public Safety at (856) 374-5089 to inquire about Lost and Found Property.



## EMERGENCY COMMUNICATIONS AND CLOSED CIRCUIT TELEVISION MONITORING

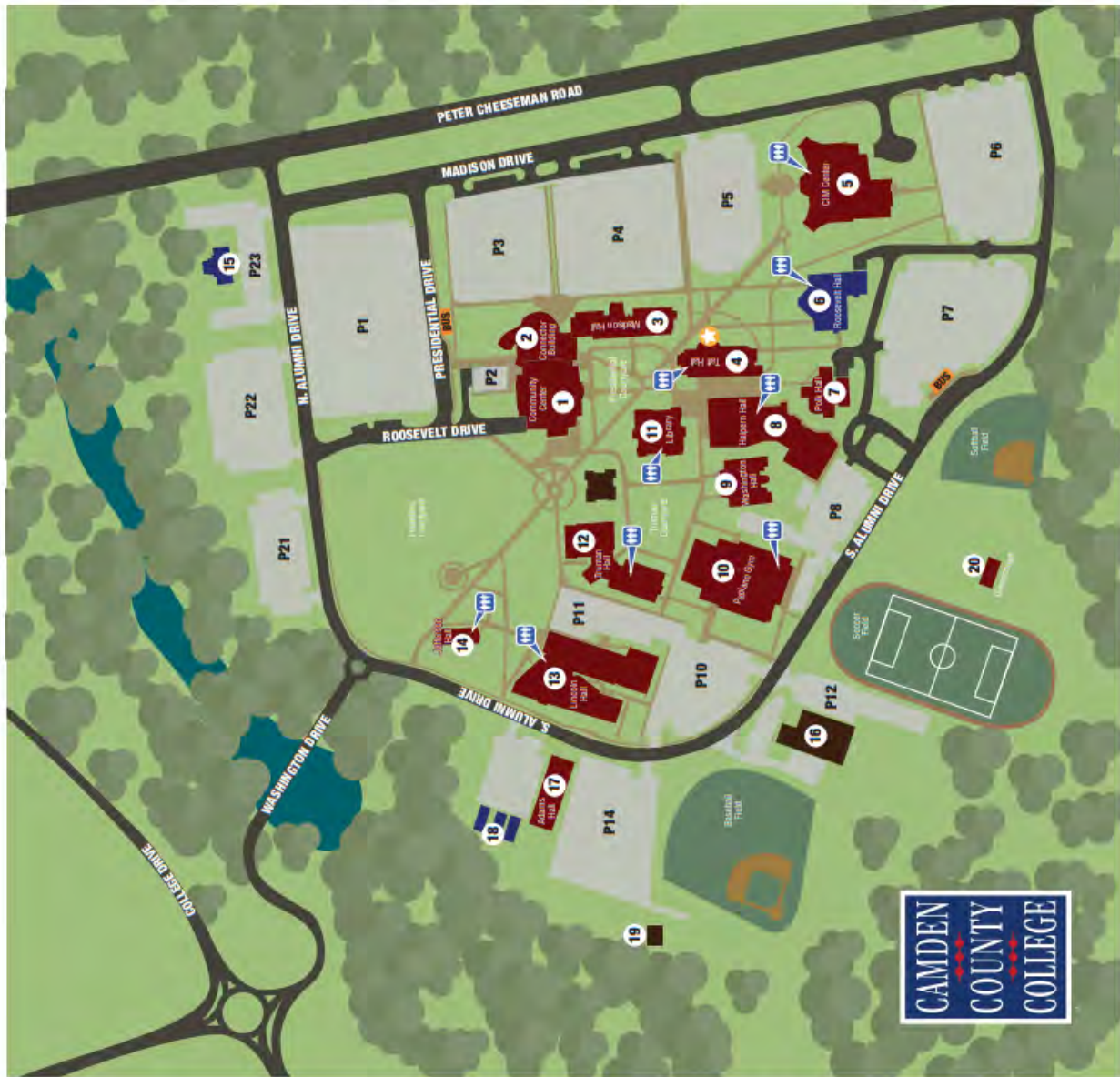
In order to enhance safety for members of the Camden County College community, the Public Safety Department has installed call boxes in centrally located areas at all Camden County College campuses. Call boxes are strategically located to assist students, staff, faculty, and visitors with jump starts, lockouts, and any emergencies that may arise. When assistance is needed, please follow the instructions on the front cover of the call box and await the arrival of a Public Safety Officer.







# CAMDEN COUNTY COLLEGE PUBLIC SAFETY DEPARTMENT Blackwood Campus Map



22-0321

## BLACKWOOD CAMPUS

- **ACADEMIC BUILDINGS**
  - **ADMINISTRATIVE BUILDINGS**
  - **BUS STOPS**
  - **PARKING LOTS**
  - **FACILITIES**
  - **ROADS**
  - **SIDEWALKS**
- 1) Otto R. Mauke Community Center.....COM
  - 2) Connector Building – Civic Hall, Atrium.....CON
  - 3) Madison Hall.....MAD
  - 4) Taft Hall – ⚡.....TAF
  - 5) Gabrieli E. Danich CIM Center.....CIM  
Rutgers Division of Continuing Studies
  - 6) Roosevelt Hall.....ROO
  - 7) Polk Hall – Cooper University Health Care ..PLK
  - 8) Kevin G. Halpern Hall for  
Science & Health Education.....HAL
  - 9) Washington Hall.....WSH  
Y.A.L.E.
  - 10) Papiano Gymnasium.....GYM
  - 11) Wolverton Library.....LIB  
New Jersey Child Assault Prevention (NJCAP)
  - 12) Truman Hall.....TRU
  - 13) Lincoln Hall.....LIN  
Dennis Flyer Memorial Theater
  - 14) Jefferson Hall.....JEF  
Rutgers
  - 15) Child Care Center – Kiddie Junction
  - 16) Facilities Offices.....ADM
  - 17) Adams Hall.....ADM
  - 18) Maintenance Storage
  - 19) Greenhouse

- ⚡ Student Services Center
- ♿ All-Gender Restrooms Available



# CAMDEN COUNTY COLLEGE PUBLIC SAFETY DEPARTMENT Clery Crime Statistics

## Campus Safety and Security Report 2023 Camden County College Blackwood Campus

Criminal Offenses									
Offense	2020			2021			2022		
	Campus	Non-Campus	Public Property	Campus	Non-Campus	Public Property	Campus	Non-Campus	Public Property
Murder	0	0	0	0	0	0	0	0	0
Manslaughter	0	0	0	0	0	0	0	0	0
Sex Offense- Force	0	0	0	0	0	0	0	0	0
Sex Offense- No Force (i.e., Fondling, Incest)	0	0	0	0	0	0	1	0	0
Robbery	0	0	0	0	0	0	0	0	0
Aggravated Assault	0	0	0	0	0	0	1	0	1
Burglary (Building)	0	0	0	0	0	0	0	0	0
Motor Vehicle Theft	0	0	0	0	0	0	0	0	0
Arson	0	0	0	0	0	0	0	0	0
Hate Crimes									
Murder	0	0	0	0	0	0	0	0	0
Manslaughter	0	0	0	0	0	0	0	0	0
Sex Offense- Force	0	0	0	0	0	0	0	0	0
Sex Offense- No Force (i.e., Fondling, Incest)	0	0	0	0	0	0	0	0	0
Robbery	0	0	0	0	0	0	0	0	0
Aggravated Assault	0	0	0	0	0	0	0	0	0
Burglary (Building)	0	0	0	0	0	0	0	0	0
Motor Vehicle Theft	0	0	0	0	0	0	0	0	0
Arson	0	0	0	0	0	0	0	0	0
VAWA (Violence Against Women ACT) Offenses									
Dating Violence	0	0	0	1	0	0	0	0	0
Domestic Violence	0	0	0	0	0	0	0	0	0
Stalking	0	0	0	2	0	0	0	0	0
Arrests									
Weapons: Possession	0	0	0	0	0	0	0	0	1
Drug Abuse Violations	0	0	0	0	0	0	0	0	0
Liquor Law Violations	0	0	0	0	0	0	1	0	0
Disciplinary Actions									
Weapons: Possession	0	0	0	0	0	0	0	0	0
Drug Abuse Violations	1	0	0	0	0	0	0	0	0
Liquor Law Violations	0	0	0	0	0	0	0	0	0



# CAMDEN COUNTY COLLEGE PUBLIC SAFETY DEPARTMENT Clery Crime Statistics

## Campus Safety and Security Report 2023 Camden County College Camden Campus

Criminal Offenses									
Offense	2020			2021			2022		
	Campus	Non-Campus	Public Property	Campus	Non-Campus	Public Property	Campus	Non-Campus	Public Property
Murder	0	0	0	0	0	0	0	0	0
Manslaughter	0	0	0	0	0	0	0	0	0
Sex Offense- Force	0	0	0	0	0	0	0	0	0
Sex Offense- No Force (i.e., Fondling, Incest)	0	0	0	0	0	0	0	0	0
Robbery	0	0	0	0	0	0	0	0	0
Aggravated Assault	0	0	0	0	0	0	1	0	0
Burglary (Building)	1	0	0	0	0	0	0	0	0
Motor Vehicle Theft	0	0	0	0	0	0	0	0	0
Arson	0	0	0	0	0	0	0	0	0
Hate Crimes									
Murder	0	0	0	0	0	0	0	0	0
Manslaughter	0	0	0	0	0	0	0	0	0
Sex Offense- Force	0	0	0	0	0	0	0	0	0
Sex Offense- No Force (i.e., Fondling, Incest)	0	0	0	0	0	0	0	0	0
Robbery	0	0	0	0	0	0	0	0	0
Aggravated Assault	0	0	0	0	0	0	0	0	0
Burglary (Building)	0	0	0	0	0	0	0	0	0
Motor Vehicle Theft	0	0	0	0	0	0	0	0	0
Arson	0	0	0	0	0	0	0	0	0
VAWA (Violence Against Women ACT) Offenses									
Dating Violence	0	0	0	0	0	0	0	0	0
Domestic Violence	0	0	0	0	0	0	0	0	0
Stalking	0	0	0	0	0	0	0	0	0
Arrests									
Weapons: Possession	0	0	0	0	0	0	0	0	0
Drug Abuse Violations	0	0	0	0	0	0	0	0	0
Liquor Law Violations	0	0	0	0	0	0	0	0	0
Disciplinary Actions									
Weapons: Possession	0	0	0	0	0	0	0	0	0
Drug Abuse Violations	0	0	0	0	0	0	0	0	0
Liquor Law Violations	0	0	0	0	0	0	0	0	0

# PUBLIC SAFETY DEPARTMENT

## Clery Crime Statistics

### Campus Safety and Security Report 2023 Camden County College Cherry Hill Campus

Criminal Offenses									
Offense	2020			2021			2022		
	Campus	Non-Campus	Public Property	Campus	Non-Campus	Public Property	Campus	Non-Campus	Public Property
Murder	0	0	0	0	0	0	0	0	0
Manslaughter	0	0	0	0	0	0	0	0	0
Sex Offense- Force	0	0	0	0	0	0	0	0	0
Sex Offense- No Force (i.e., Fondling, Incest)	0	0	0	0	0	0	0	0	0
Robbery	0	0	0	0	0	0	0	0	0
Aggravated Assault	0	0	0	0	0	0	0	0	0
Burglary (Building)	0	0	0	0	0	0	0	0	0
Motor Vehicle Theft	0	0	0	0	0	0	1	0	0
Arson	0	0	0	0	0	0	0	0	0
Hate Crimes									
Murder	0	0	0	0	0	0	0	0	0
Manslaughter	0	0	0	0	0	0	0	0	0
Sex Offense- Force	0	0	0	0	0	0	0	0	0
Sex Offense- No Force (i.e., Fondling, Incest)	0	0	0	0	0	0	0	0	0
Robbery	0	0	0	0	0	0	0	0	0
Aggravated Assault	0	0	0	0	0	0	0	0	0
Burglary (Building)	0	0	0	0	0	0	0	0	0
Motor Vehicle Theft	0	0	0	0	0	0	0	0	0
Arson	0	0	0	0	0	0	0	0	0
VAWA (Violence Against Women ACT) Offenses									
Dating Violence	0	0	0	0	0	0	0	0	0
Domestic Violence	0	0	0	0	0	0	0	0	0
Stalking	0	0	0	0	0	0	0	0	0
Arrests									
Weapons: Possession	0	0	0	0	0	0	0	0	0
Drug Abuse Violations	0	0	0	0	0	0	0	0	0
Liquor Law Violations	0	0	0	0	0	0	0	0	0
Disciplinary Actions									
Weapons: Possession	0	0	0	0	0	0	0	0	0
Drug Abuse Violations	0	0	0	0	0	0	0	0	0
Liquor Law Violations	0	0	0	0	0	0	0	0	0



# CAMDEN COUNTY COLLEGE PUBLIC SAFETY DEPARTMENT Clery Crime Statistics

**Campus Safety and Security Report 2023**

**Camden County College**

**Joint Health Sciences Center**

**(A portion of the Campus became Property of CCC in 2019)**

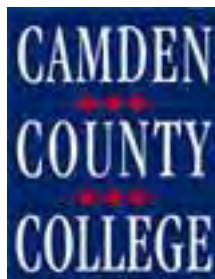
Criminal Offenses									
Offense	2020			2021			2022		
	Campus	Non-Campus	Public Property	Campus	Non-Campus	Public Property	Campus	Non-Campus	Public Property
Murder	0	0	0	0	0	0	0	0	0
Manslaughter	0	0	0	0	0	0	0	0	0
Sex Offense- Force	0	0	0	0	0	0	0	0	0
Sex Offense- No Force (i.e., Fondling, Incest)	0	0	0	0	0	0	0	0	0
Robbery	0	0	0	0	0	0	0	0	0
Aggravated Assault	0	0	0	0	0	3	0	0	1
Burglary (Building)	0	0	0	0	0	0	0	0	0
Motor Vehicle Theft	0	0	0	0	0	0	0	0	0
Arson	0	0	0	0	0	0	0	0	0
Hate Crimes									
Murder	0	0	0	0	0	0	0	0	0
Manslaughter	0	0	0	0	0	0	0	0	0
Sex Offense- Force	0	0	0	0	0	0	0	0	0
Sex Offense- No Force (i.e., Fondling, Incest)	0	0	0	0	0	0	0	0	0
Robbery	0	0	0	0	0	0	0	0	0
Aggravated Assault	0	0	0	0	0	0	0	0	0
Burglary (Building)	0	0	0	0	0	0	0	0	0
Motor Vehicle Theft	0	0	0	0	0	0	0	0	0
Arson	0	0	0	0	0	0	0	0	0
VAWA (Violence Against Women ACT) Offenses									
Dating Violence	0	0	0	0	0	0	0	0	0
Domestic Violence	0	0	0	0	0	0	0	0	0
Stalking	0	0	0	0	0	0	0	0	0
Arrests									
Weapons: Possession	0	0	0	0	0	0	0	0	0
Drug Abuse Violations	0	0	0	0	0	0	0	0	2
Liquor Law Violations	0	0	0	0	0	0	0	0	1
Disciplinary Actions									
Weapons: Possession	0	0	0	0	0	0	0	0	0
Drug Abuse Violations	0	0	0	0	0	0	0	0	0
Liquor Law Violations	0	0	0	0	0	0	0	0	0



# CAMDEN COUNTY COLLEGE PUBLIC SAFETY DEPARTMENT Clery Crime Statistics

**Campus Safety and Security Report 2023**  
Camden County College  
Lakeland Campus - Regional Emergency Training Center (RETC)

<b>Criminal Offenses</b>									
<b>Offense</b>	<b>2020</b>			<b>2021</b>			<b>2022</b>		
	<b>Campus</b>	<b>Non-Campus</b>	<b>Public Property</b>	<b>Campus</b>	<b>Non-Campus</b>	<b>Public Property</b>	<b>Campus</b>	<b>Non-Campus</b>	<b>Public Property</b>
Murder	0	0	0	0	0	0	0	0	0
Manslaughter	0	0	0	0	0	0	0	0	0
Sex Offense- Force	0	0	0	0	0	0	0	0	0
Sex Offense- No Force (i.e., Fondling, Incest)	0	0	0	0	0	0	0	0	0
Robbery	0	0	0	0	0	0	0	0	0
Aggravated Assault	0	0	0	0	0	0	0	0	0
Burglary (Building)	0	0	0	0	0	0	0	0	0
Motor Vehicle Theft	0	0	0	0	0	0	0	0	0
Arson	0	0	0	0	0	0	0	0	0
<b>Hate Crimes</b>									
Murder	0	0	0	0	0	0	0	0	0
Manslaughter	0	0	0	0	0	0	0	0	0
Sex Offense- Force	0	0	0	0	0	0	0	0	0
Sex Offense- No Force (i.e., Fondling, Incest)	0	0	0	0	0	0	0	0	0
Robbery	0	0	0	0	0	0	0	0	0
Aggravated Assault	0	0	0	0	0	0	0	0	0
Burglary (Building)	0	0	0	0	0	0	0	0	0
Motor Vehicle Theft	0	0	0	0	0	0	0	0	0
Arson	0	0	0	0	0	0	0	0	0
<b>VAWA (Violence Against Women ACT) Offenses</b>									
Dating Violence	0	0	0	0	0	0	0	0	0
Domestic Violence	0	0	0	0	0	0	0	0	0
Stalking	0	0	0	0	0	0	0	0	0
<b>Arrests</b>									
Weapons: Possession	0	0	0	0	0	0	0	0	0
Drug Abuse Violations	0	0	0	0	0	0	0	0	0
Liquor Law Violations	0	0	0	0	0	0	0	0	0
<b>Disciplinary Actions</b>									
Weapons: Possession	0	0	0	0	0	0	0	0	0
Drug Abuse Violations	0	0	0	0	0	0	0	0	0
Liquor Law Violations	0	0	0	0	0	0	0	0	0



P.O. Box 200 College Drive  
Blackwood, NJ 08012  
(856) 227-7200 • (856) 374-5089  
Designed and printed at Camden County College

As an Equal Opportunity/Affirmative Action institution, Camden County College does not discriminate in admissions or access to, or treatment or employment on the basis of race, color, national origin, sex, disability, or age in its programs and activities. The following persons have been designated to handle inquiries/complaints regarding non-discrimination policies:

- **Title IX Coordinator:** Executive Dean, Student Affairs, 856-227-7200, ext. 4371, Taft Hall, Room 233, Blackwood Campus
- **Deputy Title IX and ADA Coordinator for Employees:** Assistant Director of Human Resources, 856-227-7200, ext. 4391, Roosevelt Hall, Room 106, Blackwood Campus
- **Deputy Title IX and Section 504 Coordinator for Students:** Associate Dean of Students, 856-227-7200, ext. 5088, Taft Hall, Room 302, Blackwood Campus
- **Title II for Employees and Students:** Building Operations Manager, 856-227-7200, ext. 4575 Physical Plant, Blackwood Campus

Students and employees have the legal right to appeal grievances with the local Office for Civil Rights, New York Office for Civil Rights, U. S. Department of Education, 32 Old Slip, 26th Floor, New York, New York 1005-2500, Telephone 646-428-3900, Fax: 646-428-3843; Tdd: 800-877-8339, EmaOCR.Newyork@Ed.Gov

Public Annual Notification Regarding Career and Technical Education  
Camden County College Public Notice

**AN EQUAL OPPORTUNITY/AFFIRMATIVE ACTION INSTITUTION**